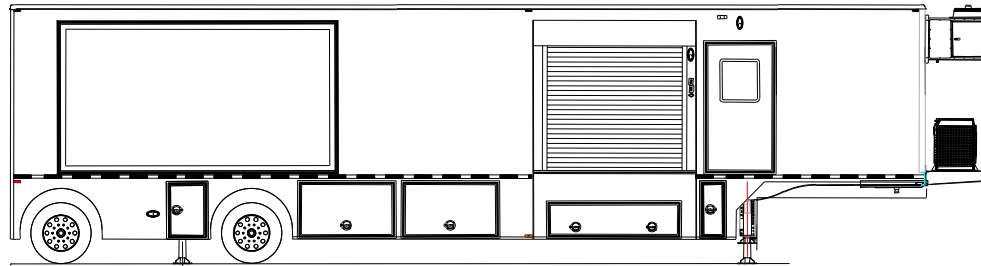


Operator and Service Manual

GE MIDR Mobile PET/CT System 48' L x 8'-6" W x 13'-6" H USA Unit



© 2018 Advanced Mobility Specialty Vehicles, All Rights Reserved

This manual contains confidential information of Advanced Mobility Specialty Vehicles.

This manual may be used only by you, and only for the purposes for which it was intended. You may not disclose this manual or the confidential information it contains outside of your company.

If you wish to copy any part of this manual, or to use it other than as described above, you must contact Advanced Mobility Specialty Vehicles seeking permission to do so.

You may not copy it or any part of it without the written permission of Advanced Mobility Specialty Vehicles.

[North America](#)

Corporate Headquarters

Advanced Mobility Specialty
Vehicles

500 Crossings
University Park, Illinois
60484
USA
(001) 800.839.0630
(001) 708-235-2002 FAX



Kentucky Trailer
6370 Emerald Pkway, Ste.106
Monee, IL 60449
(708) 235-2800 main number
(708) 235-2002 fax

Custom Specialty Vehicles



GPCMI-3000-D10-48-00
Page 2 of 102

As part of Advanced Mobility Specialty Vehicles' on-going program to improve its products and service, Advanced Mobility Specialty Vehicles reserves the right to implement product changes and disseminate changes in design and service information without notice or recourse.

For questions regarding the Operation or Service of this unit, please call Advanced Mobility Specialty Vehicles at 800.839.0630.

List of Revisions & Warnings

Revisions

Date	Revision Number	Revised by	Description
8/31/18	00	Chirag Patel	Initial Release

Notice

In accordance with our policy of product development, Advanced Mobility Specialty Vehicles reserves the right to make changes in the equipment, design, specifications, and materials of the product described herein. If there are any inconsistencies between this manual and the mobile unit that inhibit serviceability, please contact Advanced Mobility Specialty Vehicles for assistance.

This manual is provided in the mobile unit. The documentation package should be kept in the mobile unit at all times.

Any problems or questions related to the components or systems covered in this manual please direct to:

Advanced Mobility Specialty Vehicles

500 Crossing
University Park, Illinois
60484
USA
(001) 800.839.0630
(001) 708-235-2002 FAX

<http://www.amstcorp.com>

Warnings & Safety Alert Conventions

The following terms define the various precautions and notices used in this manual:

NOTE:

Whenever information exists that requires additional emphasis beyond the standard textual information, the term “NOTE” is used.

IMPORTANT

Whenever information exists that requires special attention to procedures to ensure proper operation of the equipment or to prevent its possible failure, the term “IMPORTANT” is used.

CAUTION

Whenever potential damage to equipment exists, requiring correct procedures / practices for prevention, the term “CAUTION” is used.

WARNING

Whenever potential personal injury or death situations exist, requiring correct procedures / practices for prevention, the term “WARNING” is used.

DANGER

Whenever immediate hazards exist that could result in personal injury or death that cannot be eliminated by design safeguards, the term “DANGER” is used.



This safety alert symbol indicates important safety messages in the manual. When you see this symbol, carefully read the message that follows and be alert to the possibility of personal injury or death.

WARNING

Electrical, mechanical, pneumatic, and hydraulic safety devices have been installed on this vehicle to help protect against personal injury and / or damage to equipment. Under no circumstances should any attempt be made to disconnect or in any way render any of these devices inoperative. If a malfunction of any safety device is discovered to exist, DO NOT operate the vehicle, but immediately notify appropriate maintenance personnel.

Advanced Mobility Specialty Vehicles shall have no liability with respect to:

Repairs improperly performed or replacements improperly installed (or) use of replacement parts or accessories not conforming to Advanced Mobility Specialty Vehicles’ specifications, which adversely affect performance or durability (or) alterations or modifications not recommended or approved in writing by Advanced Mobility Specialty Vehicles (or) for equipment damage or personal injury or death as a result of rendering any safety device inoperable.

Certain inherent risks are associated with heavy trailers due to the nature of their use. Personnel working in the area of these trailers are subject to certain hazards that cannot be met by mechanical means but only by the exercise of intelligence, care, and common sense. It is therefore essential for the owner of this equipment to have personnel involved in the use and operation of these trailers who are competent, careful, physically and mentally qualified, and trained in the safe operation of this equipment.

If you identify a hazard not covered by this manual, please contact Advanced Mobility Specialty Vehicles right away at (001) 800.839.0360.

Table of Contents

List of Revisions & Warnings	3
Revisions	3
Notice.....	3
Warnings & Safety Alert Conventions	4
Section 1: Introduction.....	14
Section 2: Safety Guidelines	16
2.1 Operator's General Safety Precautions	17
2.2 Electrical Safety.....	18
2.3 Transportation Safety.....	19
Section 3: Mobile Unit Overview	20
3.1 Air Suspension Controls.....	20
.....	20
3.2 Canopy (optional)	21
3.3 Control Room Overall	22
3.4 Exterior Overall.....	24





Kentucky Trailer
 6370 Emerald Pkway, Ste.106
 Monee, IL 60449
 (708) 235-2800 main number
 (708) 235-2002 fax

Custom Specialty Vehicles



3.5 Fuel Compartment	25
3.6 Gantry Room Overall	26
3.7 Glad-hand Connections	27
3.8 Hubbell All Weather Phone Cables	28
3.9 Levels, Digital	28
3.10 Mobile Unit Controls.....	29
3.11 Phone & Data Line Connections	30
3.12 Rear Stabilizing Stands.....	30
3.14 Stair Assembly.....	32
<u>Section 4: Safety Systems</u>	33
4.1 Emergency Lighting	33
4.2 Fire Suppression (manual).....	34
4.3 Fire Detection System.....	34
4.3.1 System Operation.....	35
4.3.2 Pull Station.....	35
4.3.3 Power Backup System.....	36
4.4 Platform Lift	36
4.5 Marker Lights.....	36
4.6 System Shutdown.....	36
4.7 Warning Lights.....	36
<u>Section 5: Mobile Unit Setup Procedure</u>	37
5.1 Park the Mobile Unit	37
5.2 Lower the Front Stabilizing Legs	37
5.3 Disconnect the Tractor.....	37
5.4 Install the Rear Stabilizing Stands.....	38
5.5 Re-level the Mobile Unit.....	38
5.6 Disconnect the Tractor Air and Electrical Lines.....	38
5.7 Lower the Auxiliary Support Legs.....	38
5.8 Connect to Shore Power.....	39
5.9 Connect the Phone and Data Lines.....	40
5.10 Connect the Water Hose.....	41
5.11 Install the Stair Assembly.....	42
5.11.1 Stair Assembly without the Platform.....	42
5.11.2 Stair Assembly with the Platform.....	42
5.12 Platform Lift Deployment.....	43
5.13 Extend the Slide-outs.....	43
5.14 Remove Restraining Hardware	44



Kentucky Trailer
6370 Emerald Pkwy, Ste.106
Monee, IL 60449
(708) 235-2800 main number
(708) 235-2002 fax

Custom Specialty Vehicles



GPCMI-3000-D10-48-00
Page 7 of 102

Section 6: Mobile Unit Transport Procedure	45
6.1 Secure all Equipment	45
6.2 Retract Slide-outs to Transport Position	45
6.3 Return the Platform Lift to the Transport Position	46
6.4 Remove and Store the Stair Assembly	47
6.4.1 Standard Stair System	47
6.4.2 Stair Assembly without the Platform	47
6.5 Disconnect and Switch from Shore Power to Generator Power	48
6.6 Disconnect Phone and Data Lines	48
6.7 Disconnect the Water Hose	48
6.8 Raise the Auxiliary Support Legs	48
6.9 Connect the Tractor Air and Electrical Lines	48
6.10 Remove the Rear Stabilizing Stands	49
6.11 Connect the Tractor to the Mobile Unit	49
6.12 Raise the Front Stabilizing Legs	49
6.13 Verify that the Mobile Unit is ready for Transport	50
Section 7: Electrical System	51
7.1 System A1 Panel and 120/208V AC Electrical Panels (interior)	52
7.2 Automatic Transfer Switch (ATS) Panel (underbody)	53
7.3 Facility Power Connection	54
7.4 Power Cable	55
Section 8: Generator	56

8.1 Automatic Transfer Switch (ATS)



.....59

Section 9: Humidity System 60

9.1 System Operation60

9.2 Water Supply61

9.3 Humidity Controller61

9.4 Humidity Settings61

9.5 Electrical Connections62

9.6 Instructions62

 Attaching the water supply lines62

Section 10: HVAC System 63

10.1 System Specifications and Descriptions64

10.2 Exterior HVAC Specifications64

10.3 Interior HVAC Specifications64

10.4 Underbody Compartment Heater65

10.5 Thermostat Temperature Setting66

Section 11: Platform Lift 67

11.1 Safety Features68



Kentucky Trailer
6370 Emerald Pkwy, Ste.106
Monee, IL 60449
(708) 235-2800 main number
(708) 235-2002 fax

Custom Specialty Vehicles



GPCMI-3000-D10-48-00
Page 9 of 102

11.1.1 Lift Controls.....	68
11.1.2 Handrails.....	68
11.1.3 Lift Up Indicator Light.....	68
11.1.4 Remote Control Pendant.....	69
11.1.5 Transport Warning Light.....	69
11.1.6 Transport Warning Strobe Light.....	70
11.1.7 Lift Transport Restraining Cable.....	70
11.2 Hydraulic System.....	70
11.2.1 Operation.....	70
11.3 Platform Lift Operation.....	71
11.3.1 Deploying the Hydraulic Platform Lift for use with the Mobile Unit.....	71
11.3.2 Storing the Hydraulic Platform Lift for Transport of the Mobile Unit.....	71
<u>Section 12: Intrusion Alarm (optional).....</u>	73
12.1 Operation.....	73
<u>Section 13: Stabilizing Legs.....</u>	74
13.1 Stabilizing Stands.....	74
13.2 Rear Air Suspension System Controls.....	75
<u>Section 14: Lighting System.....</u>	76
14.1 Emergency Lighting.....	76
14.2 Exterior Lighting.....	77
14.2.1 Underbody Compartment Lighting.....	77
14.2.2 Service Lighting.....	78
14.2.3 Entry Door Lighting / Exterior Service Lighting.....	78
14.2.4 Marker & Running Lights.....	78
14.3 Interior Lighting.....	79
14.3.1 Control Room.....	79
14.3.2 Gantry Room.....	80
14.4 Warning Lights.....	81
14.4.1 AC Power Indicator Light.....	81
14.4.2 Transport Light.....	81
14.4.3 Transport Warning Light.....	81
<u>Section 15: Slide-outs.....</u>	82
15.1 Slide-out Controls.....	82
15.1.1 Expanding the Slide-outs.....	82
15.1.2 Retracting the Slide-outs.....	83
<u>Section 16: General Maintenance.....</u>	84

The information contained in this booklet is the property of AMST. The contents are confidential. They may not be used, either partially or wholly, for any purpose inconsistent with the purpose for which it was produced. The contents may not be reproduced or disclosed without written permission of Advanced Mobility Specialty Vehicles.



Kentucky Trailer
 6370 Emerald Pkway, Ste.106
 Monee, IL 60449
 (708) 235-2800 main number
 (708) 235-2002 fax

Custom Specialty Vehicles



16.1 Daily Maintenance	84
16.2 Weekly Maintenance.....	84
16.3 Monthly Maintenance.....	85
16.4 Quarterly Maintenance.....	85
<u>Section 17: Specific Maintenance</u>	86
17.1 Door Closer Adjustments	86
17.2 Electrical System	86
17.3 Generator System.....	87
17.4 Humidity System.....	87
17.5 HVAC System.....	87
17.6 Platform Lift	88
17.7 Stabilizing Legs.....	88
<u>Appendix A: Mobile Unit Checklist</u>	89
Mobile Unit Setup Checklist	90
Mobile Unit Transport Checklist	91
<u>Appendix B: Troubleshooting</u>	92
AC Power Indicator Light is off...and White Strobe is flashing	92
Transport Warning Light is on.....	92
Humidity is out of specifications.....	93
Humidifier Empty Water Light is illuminated	93
Temperature is out of specifications... ..	94
<u>Appendix C: HVAC Set Points.....</u>	95
Temperature Controller Settings	95
Humidity Settings.....	95
<u>Appendix D: A-1 Circuit Malfunction Checklist</u>	96
Category 1.....	96
Category 2.....	96
<u>Appendix E: Lockout/Tagout Procedures</u>	97
Specific Energy Control Procedures.....	97
Machine or Equipment for this Procedure:.....	97
Control of Hazardous Energy:	97
Affected Personnel to notify when the Specialty Vehicles Trailer is to be Locked Out:.....	97
Shut down specifications for the Specialty Vehicle Trailers:	98
Methods to dissipate energy:.....	98
Method of Verifying the Isolation of the Machine or Equipment:	98
<u>Appendix F: Leveling The Mobile Unit.....</u>	99



Kentucky Trailer
6370 Emerald Pkwy, Ste.106
Monee, IL 60449
(708) 235-2800 main number
(708) 235-2002 fax

Custom Specialty Vehicles



GPCMI-3000-D10-48-00
Page 11 of 102

Appendix G: Quarterly Maintenance Checklist..... 100



Kentucky Trailer
 6370 Emerald Pkway, Ste.106
 Monee, IL 60449
 (708) 235-2800 main number
 (708) 235-2002 fax

Custom Specialty Vehicles



GPCMI-3000-D10-48-00
 Page 12 of 102

List of Figures

Figure 1: The GE MIDR PET/CT System..... 14

Figure 2: Air Suspension Controls 20

Figure 3: Canopy 21

Figure 4: Control Room Overall..... 23

Figure 5: Exterior Overall (Typical) 24

Figure 6: Fuel Compartment..... 25

Figure 7: Gantry Room Overall..... 26

Figure 8: Glad Hand Connections..... 27

Figure 9: Hubbell All Weather Phone Cables..... 28

Figure 10: Digital Levels..... 28

Figure 11 Mobile Unit Controls 29

Figure 12: Phone & Data Line Connections..... 30

Figure 13: Rear Stabilizing Stands 30

Figure 14: Front Stabilizing Legs and Auxiliary Support Legs..... 31

Figure 15: Stair Assembly 32

Figure 16: Control Room Emergency Lighting 33

Figure 17: Fire Extinguisher 34

Figure 18: Smoke Detector..... 34

Figure 19: Fire Alarm Control Panel 35

Figure 20: Fire Alarm Pull Station..... 35

Figure 21: Emergency Shutdown Button 36

Figure 22: Automatic Transfer Switch and Phase Power Monitor..... 40

Figure 23: Humidifier Tank Fill..... 41

Figure 24: 120/208V AC Electrical Panel..... 52

Figure 25: 480V AC ATS and Phase Power Monitor..... 53

Figure 26: Shore Power Connection..... 54

Figure 27: Generator Compartment..... 57

Figure 28: Humidity Controller 61

Figure 29: A/C Unit..... 63

Figure 30: Heater (Typical)..... 65

Figure 31: Temperature Controls..... 66

Figure 32: Hydraulic Platform Lift 67

Figure 33: Locking Plates..... 68

Figure 35: Intrusion Alarm Keypad 73

Figure 36: Front Stabilizing Leg Assembly..... 74



Kentucky Trailer
6370 Emerald Pkwy, Ste.106
Monee, IL 60449
(708) 235-2800 main number
(708) 235-2002 fax

Custom Specialty Vehicles



GPCMI-3000-D10-48-00
Page 13 of 102

Figure 37: Air Bag Controls75
Figure 38: Dual Beam Emergency Lighting.....76
Figure 39: Compartment Light.....77
Figure 40: Entry Door Lighting.....78
Figure 41: Control Room Overall Lighting.....79
Figure 42: Gantry Room Overall Lighting.....80
Figure 43: Warning Lights81
Figure 44: Slide-out Controls.....83

Section 1: Introduction

! WARNING

This manual is intended to instruct and assist personnel already qualified in the proper installation of the mobile unit. This manual is not intended to enable persons unfamiliar with the mobile unit to perform the setup and transport procedures.

IMPORTANT

An outside radiation physicist consultant determines the x-ray shielding based upon unit layout that is provided by Advanced Mobility Specialty Vehicles and scatter patterns provided the medical equipment manufacturer. It is the users responsibility to ensure proper maintenance of the x-ray shielding. It is the recommendation of Advanced Mobility Specialty Vehicles that the end user has the x-ray testing completed on an annual basis to ensure that the mobile unit still meets the minimum requirements.

This manual contains the basic information needed to setup, transport, and service the mobile unit. This mobile unit was designed to operate within certain limitations and specifications. When performing the setup or transport procedures for the mobile unit, follow the proper logical steps that have been outlined in this manual. The drawings in this manual are representative of this product. In accordance with our program of continued product development, designs and specifications are subject to change without notice.

[Figure 1: The GE MIDR PET/CT System](#)





Kentucky Trailer
6370 Emerald Pkwy, Ste.106
Monee, IL 60449
(708) 235-2800 main number
(708) 235-2002 fax

Custom Specialty Vehicles



GPCMI-3000-D10-48-00
Page 15 of 102

As part of Advanced Mobility Specialty Vehicles' on-going program to improve its products and service, Advanced Mobility Specialty Vehicles reserves the right to implement product changes and disseminate changes in design and service information without notice or recourse.

For questions regarding the Operation or Service of this unit, call Advanced Mobility Specialty Vehicles at (001) 800.839.0360 for assistance, if required.

Section 2: Safety Guidelines



Electrical, mechanical, pneumatic, and hydraulic safety devices have been installed on this vehicle to help protect against personal injury and / or damage to equipment. Under no circumstances should any attempt be made to disconnect or in any way render any of these devices inoperative. If a malfunction of any safety device is discovered to exist, DO NOT operate the vehicle, but immediately notify appropriate maintenance personnel.



Use and follow the appropriate Lockout/Tagout procedures as required by OSHA Standard 1910.147 when performing maintenance or servicing any electrical, hydraulic or pneumatic systems. See Appendix E for Lockout/Tagout procedures.



It is the operator's responsibility to verify that the shore power receptacle is of the same type and voltage as the connection that is supplied by Advanced Mobility Specialty Vehicles. Failure to do this can result in injury or death to the operator of the mobile unit as well as irreparable damage to the mobile unit.



Make sure that all electrical parts are serviced only by a certified electrician or qualified personnel. Dangerous voltages are present which could result in injury or death.



Always make sure that eyes are protected while servicing the unit. Wear safety goggles when prying, drilling, grinding, or working with batteries. Wear safety goggles over regular prescription glasses unless the lenses are made of hardened glass and can serve as safety goggles.



Be certain to disconnect the power before working on any of the electrical systems.



When servicing the unit be certain that a first aid kit and fire extinguisher are within reach at all times.

This safety section contains important information in regards to general safety guidelines that should be followed. Before attempting to service the mobile unit, read this safety section as well as all other safety sections found in applicable manufacturers' manuals in the VOL II Vendor Information binder.

2.1 Operator's General Safety Precautions

Your safety and the safety of other persons in the area of this vehicle are the result of your correct operation of this vehicle. Know the location, positions, and functions of all the controls. Know the meaning of the various Warning, Caution, Strobe, and Annunciator lights and their associated audible warning sounds.

Read this manual completely and make sure you understand the contents. Make sure you understand, for example, the characteristics of speed, stability, brakes, and steering, etc. of this vehicle. If you have any questions, contact Advanced Mobility Specialty Vehicles, 1-708-235-2800. Always keep a copy of this manual with the vehicle.

The safety information in the manual does not replace any other rules or laws for safety that are used in your area. Know the local rules or laws for safety. Make sure that your vehicle has the correct equipment to operate according to these rules or laws.

All safety hazards that can possibly arise cannot be foreseen and noted in this manual. You must always use common sense and apply the general as well as the specific safety precautions.

Make sure the work area is well ventilated.

Disconnect the electrical power to prevent the possibility of electrical shock when servicing all electrical equipment.

Follow all manufacturers' directions and request material data sheets where applicable.

Always keep tools clean and free of grease.

Do not stand on chairs inside of the mobile unit under any circumstances.

Follow all safety precautions found in the documentation package that is included with the mobile unit.

2.2 Electrical Safety



Use and follow the appropriate Lockout/Tagout procedures as required by OSHA Standard 1910.147 when performing maintenance or servicing any electrical, hydraulic or pneumatic systems. See Appendix E for Lockout/Tagout procedures.



Before connecting or disconnecting from shore power, it is imperative that the shore power connections be moved to the "OFF" position. Failure to do this can result in injury or death to the operator of the mobile unit.



It is the operator's responsibility to verify that the shore power receptacle is of the same type and voltage as the connection that is supplied by Advanced Mobility Specialty Vehicles. Failure to do this can result in injury or death to the operator of the mobile unit as well as irreparable damage to the mobile unit.



The Power Cable could present a trip hazard that could result in personal injury. Care should be taken to ensure that the cable is routed properly to minimize its potential as a trip hazard.



Always inspect the power cable, connectors, and fasteners prior to usage. If during inspection, it is suspected that either internal or external damage has occurred, have a certified electrician inspect and repair the damage before using.

When working with the electrical system for the mobile unit. Follow the warnings and cautions listed above.

2.3 Transportation Safety

Walk around the unit to make certain that all doors are closed and locked.

Make certain the Platform Lift is seated in the retaining cradles, the transport pins are in place, and the Lift Transport Restraining Cable is in place and securely connected.

Make sure that the stabilizing stands are removed and stored in the underbody compartment.



Before moving the trailer, the driver must ensure that the rear stabilizing stands have been removed and stored in the underbody compartment. Failure to do so could result in damage to equipment, and/or severe personal injury or death.

If any of the warning lights are illuminated, do not move the mobile unit.



If the Transport Warning Light is on, the mobile unit must not be moved. If the mobile unit is moved while this light is on, irreparable damage to the mobile unit, serious injury or death can occur.

Before moving the mobile unit, verify that all marker and running lights are working properly.

Consult with the local motor vehicle authority to determine if there are any travel restrictions or routes.

Section 3: Mobile Unit Overview

The components of the mobile unit have been divided into alphabetical order. With each component a picture and description will be found to better illustrate the components of the mobile unit. Additional components of the mobile unit can be found within the remaining chapters.

3.1 Air Suspension Controls

The Air Suspension Controls are used to Raise, Lower or Deflate the rear suspension. These controls are to be used when setting up the unit for operating the PET/CT system, for normal transport, or for raising or lowering the rear of the unit if special circumstances dictate its use.

Figure 2: Air Suspension Controls



3.2 Canopy (optional)

This retractable canopy is positioned above the Platform Lift to provide shelter from the elements. The handle used to deploy the unit is neatly stowed in Equipment Room during transit.



Figure 3: Canopy

3.3 Control Room Overall

Control Room houses the system components that support the medical system. In this room, the operators console can be found, system controls, cabinets for storage, and all of the associated volumes of literature.





Figure 4: Control Room Overall

The button and light labeled above indicates the following when light is illuminated:

A – Medical E- Stop.

B – PET/CT Gantry and Table are not ready for Transport.

3.4 Exterior Overall

In these pictures the Platform Lift, the staff entry door, and the generator housing can be seen.



Left Side



Right Side

Figure 5: Exterior Overall (Typical)

3.5 Fuel Compartment

The fuel compartment stores the fuel tank, fuel gauge, fuel pump, and fuel separator.

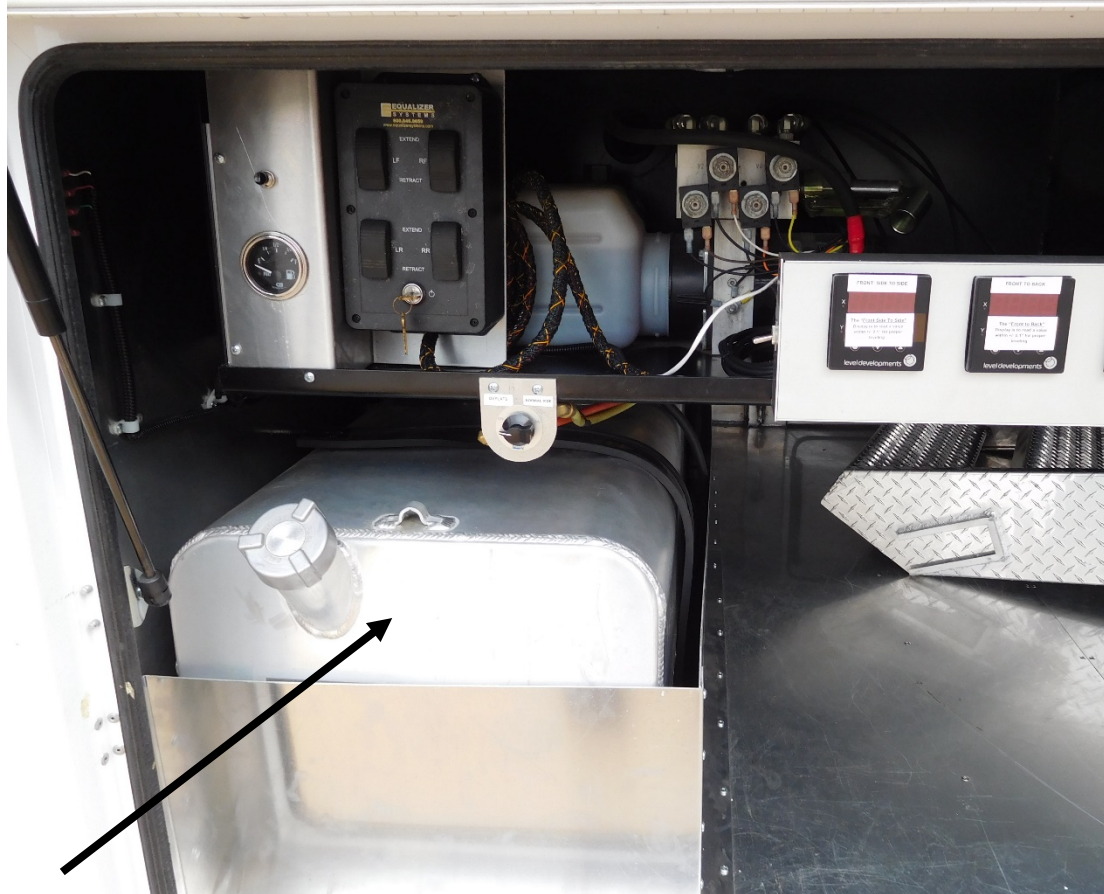


Figure 6: Fuel Compartment

- | | |
|-----------------------------|--------------------------------------------------------------------------------------------------------------------------------|
| Fuel Gauge: | The fuel gauge is push button activated and will give an accurate reading of the available fuel supply. |
| Fuel Pump (not shown): | The fuel pump pumps the fuel from the fuel tank to the generator. |
| Fuel Separator (not shown): | The fuel separator removes debris from the fuel supply. |
| Fuel Tank: | The fuel tank stores and supplies fuel to the generator. The capacity of the fuel tank is 70 US gallons. Only use diesel fuel. |

3.6 Gantry Room Overall

Gantry Room is divided into two (2) sections. The first section houses the medical system and the controls for the slide-outs. The other section of the room is located behind a curtain and stores the humidifier, the electrical distribution panels and the associated support equipment for the medical system.



Figure 7: Gantry Room Overall

3.7 Glad-hand Connections

The glad hands are the connection point between the tractor and the mobile unit. All connections must be made before moving the mobile unit. Failure to make all connections can result in damage to the mobile unit.



Figure 8: Glad Hand Connections

- | | |
|------------------------------|--------------------------------------------------------------------------------|
| Emergency Airline: | Backup airline in the event that the main airline fails. |
| Key Lock Box: | A combination lock that holds a key to the mobile unit. |
| Service Airline: | The main airline for the mobile unit. |
| Standard Electrical Service: | The main electrical connection for the mobile unit. |
| Generator Access: | The generator housing comes with locking doors to prevent unauthorized access. |

3.8 Hubbell All Weather Phone Cables

Hubbell all weather phone cables are required for use with the Hubbell all weather phone connections.



Figure 9: Hubbell All Weather Phone Cables

3.9 Levels, Digital

The digital levels allow the mobile unit to be leveled both front to back and side to side. It is imperative that the unit be leveled prior to use. Refer to [Appendix F: Leveling The Mobile Unit](#).

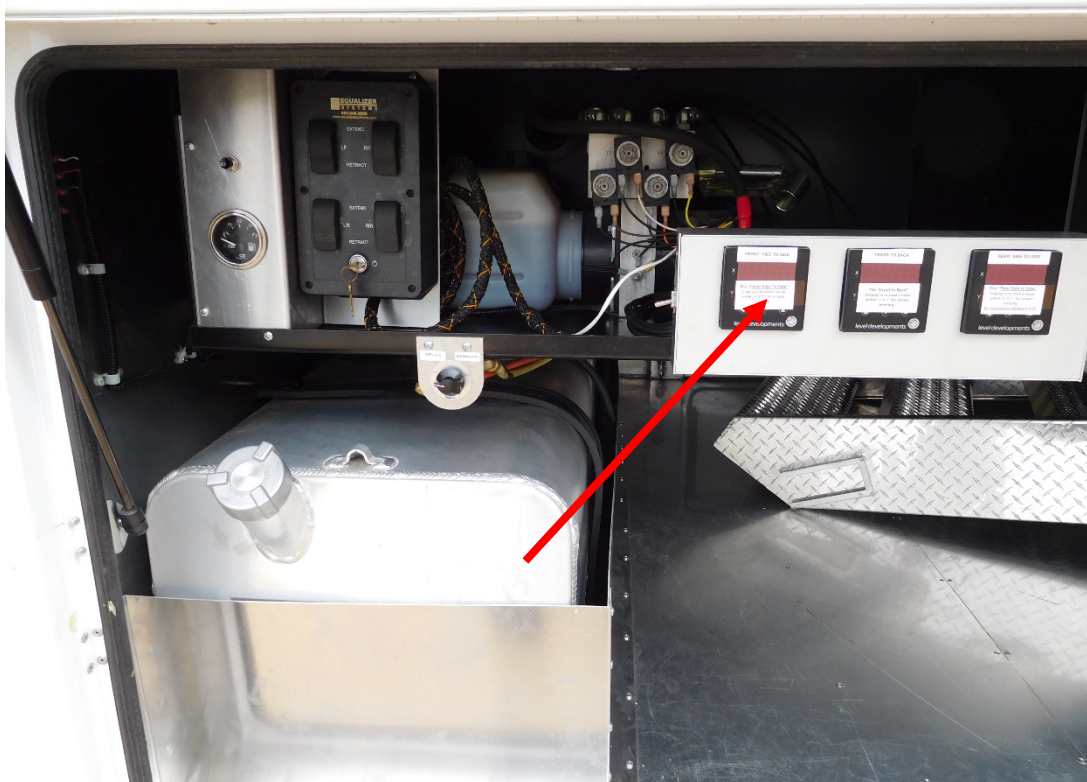


Figure 10: Digital Levels

3.10 Mobile Unit Controls

Located on the aluminum raceways inside of the mobile unit are the various controls that are used for operating such items as, the interior and exterior lights, emergency stop buttons, fire alarms, and emergency equipment.



Figure 11 Mobile Unit Controls

- | | |
|-------------------------------------------------------|-------------------------------------------------------------------------------|
| Control Room Dimmer and Exterior Stair Light Switches | ON / OFF light switch for Exterior lights and Dimmer Switch for Control Room. |
| Gantry Room Light Switches: | ON / OFF light switch for Gantry Room lights. |
| E Stop: | Emergency stop button for the medical system. |

3.11 Phone & Data Line Connections

The phone and data connections are located in the underbody compartments. The connections are used to connect the mobile unit to the shore facility. The telephone connections utilize a Hubbell all-weather connection, while the data lines utilize an RJ-45 connection and CAT-5E cabling.



Figure 12: Phone & Data Line Connections

Hubbell Phone Connections

The Hubbell all weather phone connections are to be used with the provided Hubbell all weather telephone cable.

Data Connections

The data connections that are utilized are RJ-45's. The connections utilize CAT-5E cable and can be connected directly to the facility

3.12 Rear Stabilizing Stands

The stabilizing stands are placed underneath the rear of the mobile unit when the medical system is in use. These stands help to level the mobile unit and decrease vibration caused by the medical system. If shims are needed, use only the aluminum shims that have been provided.



Figure 13: Rear Stabilizing Stands

3.13 Front Landing / Stabilizing Legs

The Front Landing / Stabilizing legs and auxiliary support legs can be found at front of the mobile unit. They are used in order to level the unit prior to use. Since the landing / stabilizing legs are hydraulically controlled, the manual auxiliary legs must also be used as a backup.



Figure 14: Front Stabilizing Legs and Auxiliary Support Legs

3.14 Stair Assembly

The stairs allow access to the interior of the mobile unit through the staff door.

There are two (2) possible (optional) configurations for the stair assembly. The first configuration attaches the stairs directly to the mobile unit, as shown, while the second configuration utilizes a platform. The stairs are then attached to the platform.

When using the platform, the stairs can be attached either perpendicular or horizontal to the mobile unit.



Figure 15: Stair Assembly



The maximum capacity of the stairs and /or platform is 375 pounds.

Exceeding this capacity could result in damage to equipment or personal injury.

Section 4: Safety Systems

This safety section contains important information about the safety systems that have been built into the mobile unit to protect all personnel and equipment. Before attempting to service the mobile unit, read this safety section as well as all other safety sections found in applicable manufacturers' manuals in the component literature binder.

4.1 Emergency Lighting

In the event that the main AC power fails, three dual beam emergency lights are provided in the Dispensing Lab, Control Room and Gantry Room. The light will automatically illuminate when the main AC power is lost. The emergency lighting system is wired into a 120V AC electrical system that allows the lights internal circuitry to keep its batteries at 100% charge. The emergency lights will last for approximately 90 minutes.



Figure 16: Control Room Emergency Lighting

4.2 Fire Suppression (manual)

Only one fire extinguisher is supplied with the mobile unit. Instructions for operation are clearly printed on the canister of the fire extinguisher.

The fire extinguisher meets the following standards:

It is a class A/B/C
1211 hand held unit.

It has a charged
weight of 5lbs.

It is U.L. listed.

It meets D.O.T.
requirements.

It is in accordance
with N.F.P.A.
Standard No. 10,
"Portable Fire
Extinguisher".



Figure 17: Fire Extinguisher

4.3 Fire Detection System

A standard fire detection system is installed in the mobile unit. The fire detection system works via photoelectric smoke detectors located on the ceiling panels in each room of the mobile unit. In the event of a fire being detected, an alarm will sound.



Figure 18: Smoke Detector



Figure 19: Fire Alarm Control Panel

- Reset Button: The reset button resets the system after it has been activated
- Trouble Silence Button: The trouble silence button will silence the horns that are activated after the alarm has been tripped.
- Disable Button: The disable button will shut the alarm system down for maintenance.

4.3.1 System Operation

During normal operation, the control unit remains in a supervisory mode. If one smoke detector goes into alarm, it will trigger the following actions.

1. The fire horn will sound continuously.
2. A “RED” alarm LED located on the front cover of the fire system control panel will illuminate.
3. The strobe light will flash.
4. The HVAC units will shutdown.

4.3.2 Pull Station

A pull station is located next to the staff door in the Control Room. When the pull station has been pulled, the steps outlined above will occur.



Figure 20: Fire Alarm Pull Station

4.3.3 Power Backup System

Primary 120V AC power to the fire system control panel is supplied from the 480V AC service panel. When the primary power is lost, on-line emergency batteries built into the system will provide 24 hours of supervisory power.

- When primary power is lost, both the green “POWER” LED and the yellow “TROUBLE” LED will flash.
- The “SYSTEM TROUBLE” and “POWER TROUBLE” LED’s will also begin to illuminate.
- The audible alert located inside of the system control panel will begin to BEEP.

The emergency batteries are rechargeable gel celled. They are also float charged to provide quick recovery after primary power is restored.

4.4 Platform Lift

There are multiple safety features for the Platform Lift. For a full list of the safety features, please refer to [Section 11: Platform Lift](#).

4.5 Marker Lights

Extra LED type marker and side turn signal lights are installed on the trailer body to assist the driver with maneuvering the mobile unit.

4.6 System Shutdown

All shutdowns refer only to the medical system.



Control Room

Figure 21: Emergency Shutdown Button

4.7 Warning Lights

Please Refer to [Section 14: Lighting System](#) for additional information in regards to these systems.

Section 5: Mobile Unit Setup Procedure



The GE medical system requires the HVAC system to be supplied power at all times. During transit of the mobile unit via the generator and when the unit is in the parked position via shore power.



The stabilizing legs and rear suspension are not to be used to raise the mobile unit off the ground. The legs are meant only to level the unit and place it in a parked position. If the legs are used in an attempt to raise the mobile unit from the ground, serious damage may occur to the mobile unit.



Failure to remove the transport pins from the Platform Lift, prior to deployment, can result in structural damage to the mobile unit.



A checklist can be found in Appendix A that may be used as a guideline for the following procedure.

5.1 Park the Mobile Unit

In order to join the mobile unit to the facility, place the unit on the pad per the site-planning guide. Set the trailer parking brake.

5.2 Lower the Front Stabilizing Legs

After the mobile unit has been parked on the pad per the site-planning guide, the front stabilizing legs must be lowered to stabilize the mobile unit before it can be used. Refer to [Figure 36: Front Stabilizing Leg Assembly](#) for the following procedure.

Move and hold the pump switch in the “Pump ON” position.

Pull the levers towards you to extend the stabilizing legs to their extended position.

Extend the legs far until the front of the unit has been raised high enough to clear the fifth wheel.

Release the pump switch. The switch should automatically return to the “Pump OFF” position.

5.3 Disconnect the Tractor

Once the landing legs have been lowered, the tractor can be disconnected from the mobile unit. Verify that the mobile unit has been raised high enough to clear the tractor fifth wheel, and then disconnect the tractor from the mobile unit. **Do not** disconnect the air and electrical lines.

5.4 Install the Rear Stabilizing Stands

Open the rearmost underbody storage compartments on each side of the mobile unit and remove the rear stabilizing stands.

Place that stands underneath the rear of the mobile unit where the structural supports are located.

Return to the landing / stabilizing leg controls at the front of the mobile unit.

Locate on this control panel a switch that reads “Deflate” to the far left and “Normal Ride” to the far right.

Move this switch to the “Deflate” position.

The rear air suspension system will automatically deflate and the mobile unit will lower itself onto the rear stabilizing stands.

Check to verify that the structural supports for the mobile unit are centered on the stabilizing stands. If the supports are not centered, then the mobile unit must be raised and the stands must be adjusted accordingly.

Close the underbody compartment doors.

5.5 Re-level the Mobile Unit

After the preceding steps have been completed, the mobile unit may no longer be level. Re-level the unit if necessary using the digital levels that have been provided. Refer to [Figure 10: Digital Levels](#) if needed. Refer to [Appendix F: Leveling The Mobile Unit](#).

IMPORTANT

The unit must be level front-to-back and front side-to-side and rear side-to-side to within requirements listed below.

Check and set the “Rear Side-to-Side” to within $\pm .10^\circ$.

Check and set the level “Front-to-Back” to within $\pm .15^\circ$.

Check and set the “Front Side-to-Side” to within $\pm .10^\circ$.

NOTE: As these settings directly interact on each other, at this point, re-verify all settings to be within above requirements. Re-adjust as required.

5.6 Disconnect the Tractor Air and Electrical Lines



Failure to completely exhaust the suspension before uncoupling the air lines may result in damage to the suspension of the mobile unit.

After the mobile unit has been re-leveled, the tractor air and electrical lines can safely be removed. Refer to [Figure 8: Glad Hand Connections](#).

5.7 Lower the Auxiliary Support Legs

After the preceding steps have taken place, the auxiliary support legs can now be lowered. Refer to [Figure 36: Front Stabilizing Leg Assembly](#) for the following procedure.

Remove the pin that is currently holding the auxiliary leg in the transport position.

Lower the auxiliary support leg to within $\frac{1}{2}$ ” of the sand shoe and insert the pin into the highest available hole to lock the leg in position.

5.8 Connect to Shore Power



Before connecting or disconnecting from shore power, it is imperative that the shore power connections be moved to the “OFF” position. Failure to do this can result in injury or death to the operator of the mobile unit.



It is the operator’s responsibility to verify that the shore power receptacle is of the same type and voltage as the connection that is supplied by Advanced Mobility Specialty Vehicles. Failure to do this can result in injury or death to the operator of the mobile unit as well as irreparable damage to the mobile unit.



The Power Cable could present a trip hazard that could result in personal injury. Care should be taken to ensure that the cable is routed properly to minimize its potential as a trip hazard.



Always inspect the power cable, connectors, and fasteners prior to usage. If during inspection, it is suspected that either internal or external damage has occurred, have a certified electrician inspect and repair the damage before using.

Verify that the shore power disconnect is in the “OFF” position.

Open the underbody compartment door and remove the power cable from the underbody compartments of the mobile unit.

Insert the Advanced Mobility Specialty Vehicles supplied connector into the shore power receptacle and spin the lock ring clockwise to secure the connection.

Secure the connector lock ring to the shore facility.

Move the shore power disconnect to the “ON” position.

Note: The Phase Power Monitor checks the incoming shore power to ensure that it has the correct phase rotation (ABC) and that all three phases are present. If all three phases are present and in the correct rotation, the 480 VAC Light, on the monitor, will illuminate.

If any phase is not present or if the phase rotation is not correct, the 480 VAC Fault Light will illuminate, a piezo-electric horn will sound and a flashing strobe light on the front of the unit illuminates. Disconnect shore power immediately and investigate to determine the cause of the fault.

Close the underbody compartment door; making sure that the access flap for the power cable has been released.

IMPORTANT

The ATS will automatically transfer to Shore Power when connected to a viable power supply and shut down the generator unit. In the event of a Shore Power fault, the ATS will automatically start the generator unit and transfer power to the generator.



Figure 22: Automatic Transfer Switch and Phase Power Monitor

5.9 Connect the Phone and Data Lines

The phone and data lines can be found in the underbody storage compartments. Both the phone and data lines can now be connected from the outlets located in the underbody compartments to the receptacles located at the shore site.

The phone lines make use of Hubbell all weather connections. The data lines make use of CAT-5E cable and RJ-45 connections. Refer to [Figure 12: Phone & Data Line Connections](#).

5.10 Connect the Water Hose

On the left side exterior of the mobile unit a water connection can be found. This connection is located on an underbody compartment door.



Figure 23: Humidifier Tank Fill

Remove the cap that covers the connection.

Attach the supplied water hose to this connection.

Attach the other end of the hose to facility provided faucet.

Turn on the water at the faucet.

5.11 Install the Stair Assembly

There are two different options for the stair assembly. The first option is to attach the stairs directly to the mobile unit while the second option is to utilize the supplied platform as well. Both options can be setup easier with two people. The instructions are covered below.

5.11.1 Stair Assembly without the Platform

1. Remove the stair assembly from the underbody compartments.
2. Install the clip of the stair assembly into the channel located underneath the staff door.
3. Adjust the height of the stair legs as necessary to in order to level and secure the stairs.
4. Install the handrail into its operating position and secure in place with the hardware provided.
5. Close the door to the underbody compartment.

5.11.2 Stair Assembly with the Platform

1. Remove the stair assembly from the underbody compartments.
2. Having one person on each side of the platform, lift the platform and place the clip of the platform in the channel located beneath the staff entry door.
3. While one person holds the platform in place, the other person should insert the adjustable legs into position to support the platform.
4. Adjust the legs as necessary in order to ensure the platform is both level and secure.
5. After the platform has been supported, the slip of the stair assembly can be safely placed into the channel located on the platform.
 - a. At this point, the stair assembly can either be placed parallel or perpendicular to the mobile unit. This is dependent upon the site as well as the customers' wishes.
6. Insert the adjustable legs for the stair assembly at the base of the stairs.
7. Adjust the legs as necessary in order to ensure the stair assembly is both level and secure.
8. Place the handrails in their operating positions and secure them with the hardware provided.
9. Close the door to the underbody compartment.

5.12 Platform Lift Deployment

After the stair assembly has been installed, the Platform Lift can be deployed for use. Please refer to [Section 11: Platform Lift](#) for the following procedure.

Open the underbody compartment doors beneath the Platform Lift.

Remove the handrails and lift pendent, and place them to the side for now.

Close the underbody compartment door.

The receptacle for the remote control pendent is located next to the staff entry door. Insert the connector from the lift control pendent into the receptacle.

Remove the transport pin in order for the Platform Lift to be raised from its seated position in the cradles.

Using the remote, raise the lift high enough to clear the cradles

Carefully pull down the platform until it is parallel with the ground. A torsion bar is located within the Platform Lift hardware that will enable one person to move the lift into operating position.

Using the lift control pendent, lower the platform to the ground.

Once the platform has been lowered, install the handrails and secure them with the hardware provided.

5.13 Extend the Slide-outs

After the Platform Lift has been deployed the slide-outs for the mobile unit can now be extended.

Verify that the underbody compartment doors are closed and that no obstacles are in the path of the slide-outs.

Enter the mobile unit and remove the restraining hardware that is being used to hold the slide-outs in the transport position.



Do not release the floor latch if the slide-out is extended. The floor cylinder is pressurized when the slide-out is extended and releasing the latch could result in severe personal injury.

Before extending the slide-outs, release the hardware that is being used to hold the slide-out floors in place.

Extend the left side slide-out.

Extend the right side slide-out.

Verify that the slide-outs are in the extended position and that the floors have been completely lowered and that a seal has been made.



Kentucky Trailer
6370 Emerald Pkwy, Ste.106
Monee, IL 60449
(708) 235-2800 main number
(708) 235-2002 fax

Custom Specialty Vehicles



GPCMI-3000-D10-48-00
Page 44 of 102

5.14 Remove Restraining Hardware

There are two types of restraints that need may need to be removed prior to using the medical system. They are as follows.

The first type deals with the restraints that are used by the medical equipment manufacturer. Follow all instructions provided by the medical equipment manufacturer when adding or removing restraints from the medical equipment. These instructions can be found in the system manuals provided by the medical equipment manufacturer.

The second type deals with the restraints that are used by the mobile unit manufacturer. Various items may be secured while the unit is being transported. These items may consist of chairs, monitors, door, cabinets, cameras, and printers. Remove all restraining equipment prior to usage of the medical system.

Section 6: Mobile Unit Transport Procedure



If the mobile unit is moved without the rear air suspension functioning properly, irreparable damage can occur to the mobile unit.



The GE medical system requires the HVAC system to be supplied power at all times. During transit of the mobile unit via the generator and when the unit is in the parked position via shore power.



The stabilizing legs and rear suspension are not to be used to raise the mobile unit off the ground. The legs are meant only to level the unit and place it in a parked position. If the legs are used in an attempt to raise the mobile unit from the ground, serious damage may occur to the mobile unit.



Before transporting the mobile unit, check to verify all warning lights as well as all exterior marker lights are working correctly.



A checklist can be found in Appendix A that may be used as a guideline for the following procedure.

6.1 Secure all Equipment



The following procedure must be accomplished prior to transporting this vehicle. If these items are not accomplished, the "Transport Warning Light", located on the left side of the mobile unit will remain illuminated.

Two types of restraints need to be supplied before transporting the mobile unit. They are as follows:

The first type deals with the restraints that are used by the medical equipment manufacturer. Follow all instructions provided by the medical equipment manufacturer when applying restraints to the medical system. These instructions can be found in the system manuals provided by the medical equipment manufacturer.

The second type deals with the restraints that are used by the mobile unit manufacturer. Various items must be secured prior to transporting the mobile unit. Such items may consist of chairs, monitors, doors, cabinets, cameras, and printers. Use the supplied restraining hardware to secure these items before transporting the mobile unit.

6.2 Retract Slide-outs to Transport Position

After the equipment has been secured in the transport position the slide-outs can now be retracted.

Verify that the underbody compartment doors are closed and that no obstacles are in the path of the slide-outs.

Verify that the slide-outs are completely extended.

Retract the right side slide-out.

Retract the left side slide-out.

Secure the slide-out floors into the transport position with the supplied hardware.

Secure the slide-outs with the ratcheting strap provided.



Kentucky Trailer
6370 Emerald Pkwy, Ste.106
Monee, IL 60449
(708) 235-2800 main number
(708) 235-2002 fax

Custom Specialty Vehicles



GPCMI-3000-D10-48-00
Page 46 of 102

6.3 Return the Platform Lift to the Transport Position

Please refer to [Section 11: Platform Lift](#), and follow the procedure outlined below.

Lower the Platform Lift to the ground.

Remove the restraining hardware and handrails and temporarily place them to the side.

Raise the lift to a maximum height and fold the lift upwards to a vertical position. A torsion bar is located within the Platform Lift hardware that will enable one person to move the lift into the transport position.

Lower the lift so that it rests securely in the retaining cradles. Make sure that the micro switch is actuated.

Insert the transport pin into its transport position. Make sure that the micro switch is actuated.

Remove the remote control pendent from the socket and lock the access door to the Platform Lift controls.

Open the underbody compartment door and store the remote control pendent and handrail assembly in the underbody storage compartment.

Close the underbody compartment doors.

6.4 Remove and Store the Stair Assembly

Before removing the stair assembly, check the interior of the unit one last time to verify that all equipment is secure and ready for transport.

There are two different options for the stair assembly. The first option is to attach the stairs directly to the mobile unit while the second option is to utilize the supplied platform as well. Both options can be taken down easier with two people. The instructions are covered below.

6.4.1 Standard Stair System

1. Close and lock the staff door with the key that is provided.
2. Open the door to the underbody storage compartment.
3. Loosen the hardware holding the handrail in place. Remove the handrail from the stair assembly.
4. Lift the clip of the stair assembly up and away from the channel that is located underneath the staff door.
5. Place the stair assembly on the ground.
6. Using the sole of your shoe, step on the spring loaded release to retract the adjustable legs on each side of the stair assembly.
7. Place the stair assembly and handrail inside of the underbody storage compartment and close the compartment door.

6.4.2 Stair Assembly without the Platform

1. Open the door to the underbody compartment.
2. Release the handrails from their operating positions by loosening the hardware provided. Place the handrails to the side.
3. After the handrails have been removed, the stair assembly can be safely removed from the channel located on the platform.
4. Place the stair assembly to the side.
5. Remove the adjustable legs that were used with the stair assembly.
6. While one person holds the platform in place, another person should remove the adjustable legs that were used to support the platform. Place the adjustable legs to the side.
7. Both people should lift the clip of the platform from the channel located beneath the staff entry door.
8. Place the platform inside of the underbody compartments.
9. Place the stair assembly into the underbody compartments.
10. Place the handrails into the underbody compartments.
11. Close the underbody compartment door.

6.5 Disconnect and Switch from Shore Power to Generator Power

Move the shore power disconnect to the “OFF” position.

Once the shore power is in the “OFF” position, unthread the lock ring binding the connection together.

Remove the power cable from the shore receptacle and store in the underbody storage compartments.

The generator will automatically start and provide power to the unit.

IMPORTANT

The ATS will automatically transfer to Shore Power when connected to a viable power supply and shut down the generator unit. In the event of a Shore Power fault, the ATS will automatically start the generator unit and transfer power to the generator.

6.6 Disconnect Phone and Data Lines

Please refer to [Figure 12: Phone & Data Line Connections](#), for the following procedure.

Disconnect any phone and data lines that are currently attached to shore receptacles.

Open the compartment door and disconnect any phone and data lines that are connected in the underbody storage compartment.

Store the phone and data lines in the underbody storage compartment and close the compartment door.

6.7 Disconnect the Water Hose

On the passenger side exterior of the mobile unit a water connection can be found. This connection is located on an underbody compartment door.

Turn off the water supply at the facility provided faucet.

Disconnect the hose from the faucet.

Remove the hose from the connection on the mobile unit.

Cover the hose connection on the mobile unit with the cap provided.

Coil the hose and store in the underbody compartments.

6.8 Raise the Auxiliary Support Legs

Please refer to [Section 13: Stabilizing Legs](#) for the following procedure.

Remove the pins holding the auxiliary support legs in the locked positions.

Lift the auxiliary support legs high enough for the pin to be inserted into the lowest available hole, thereby holding the leg as high as possible.

Make sure this has been done for both auxiliary support legs. Failure to do this can damage the stabilizing legs when they are retracted.

6.9 Connect the Tractor Air and Electrical Lines

In order to remove the rear stabilizing stands, the air and electrical lines must first be connected from the tractor to the mobile unit. Please refer to [Figure 8: Glad Hand Connections](#) and follow the steps outlined below.

Back up the tractor to the mobile unit, but do not back under it at this time.

Attach the air and electrical lines from the tractor to the mobile unit.

6.10 Remove the Rear Stabilizing Stands

Open the underbody compartment door that stores the rear stabilizing stands.

Open the underbody compartment door that leads to the controls for the Landing / Stabilizing Legs.

Locate on this control panel a switch that reads “OFF” to the far left and “ON” to the far right.

Move this switch to the “OFF” position.

The rear air suspension system will automatically inflate and the mobile unit will rise to the normal ride height.

Remove the aluminum shims (if applicable). Place the shims in the rear underbody storage compartment.

Remove the rear stabilizing stands. Place the stands in the rear underbody storage compartments.

Close the underbody storage compartment doors.



Before moving the trailer, the driver must ensure that the rear stabilizing stands have been removed and stored in the underbody compartment. Failure to do so could result in damage to equipment, and/or severe personal injury or death.

6.11 Connect the Tractor to the Mobile Unit

Before connecting the tractor to the mobile unit, be certain that enough clearance has been left for the fifth wheel. If the fifth wheel cannot fit underneath the mobile unit, the front end must be raised. If it is necessary to raise the front of the mobile unit to clear the fifth wheel, please follow the steps below. Please refer to [Section 13: Stabilizing Legs](#), for the following procedure.

Move and hold the pump switch in the “ON” position.

Pull the levers towards you to extend the legs. This will lift the front end of the mobile unit.

Extend the legs high enough to clear the fifth wheel only.

Release the pump switch. The pump switch should automatically retract to the “Pump OFF” position.

Check to verify that enough room has been made for fifth wheel clearance and proceed with caution to connect the tractor to the mobile unit.

Verify that the fifth wheel is locked into position.

6.12 Raise the Front Stabilizing Legs

After the tractor has successfully connected to the mobile unit, the stabilizing legs can be raised. Refer to [Section 13: Stabilizing Legs](#) for the following procedure.

Move and hold the pump switch in the “ON” position.

Push the levers away from you to retract the legs. This will retract the legs and lower the front end of the mobile unit.

Retract the legs to their transport positions.

Release the pump switch. The pump switch should automatically return to the “Pump OFF” position.

6.13 Verify that the Mobile Unit is ready for Transport

Before the mobile unit can be transported, a final check of all components is necessary. Please refer to the following when checking the mobile unit.

Have the chairs, monitors, doors, cabinets, cameras, and printers been secured? Make sure that all of these items have been secured with the supplied hardware prior to transporting the mobile unit.

Are all exterior doors closed and locked? If not, make sure that all exterior doors are closed and locked.

Is the Platform Lift in the transport position, fully seated in its retaining cradle? If not, make sure that the Platform Lift is in the transport position, fully seated in the cradle, the transport pins are inserted, and all micro switches are actuated and the Lift Transport Restraining cable is in place and securely connected.

Are all running & marker lights working correctly? If not, replace any bulb that is not working before transporting the mobile unit.

Make sure that the stabilizing stands are removed and stored in the underbody compartment.



Before moving the trailer, the driver must ensure that the rear stabilizing stands have been removed and stored in the underbody compartment. Failure to do so could result in damage to equipment, and/or severe personal injury or death.

Are any warning lights illuminated? If so, check to find the cause of the warning. Do not move the mobile unit if any warning lights are illuminated or strobe lights are flashing. If further assistance is needed, refer to the Advanced Mobility Specialty Vehicles *General Information* binder for a list of local service representatives or call Advanced Mobility Specialty Vehicles for further assistance.

Is the fuel tank full? Check the fuel gauge, located in the underbody compartment and fill the fuel tank if necessary.

Verify that the air suspension system is fully inflated and at the proper ride height. The lowest point of the trailer sidewall should be approximately 15" above ground level.

Section 7: Electrical System



Electrical, mechanical, pneumatic, and hydraulic safety devices have been installed on this vehicle to help protect against personal injury and / or damage to equipment. Under no circumstances should any attempt be made to disconnect or in any way render any of these devices inoperative. If a malfunction of any safety device is discovered to exist, DO NOT operate the vehicle, but immediately notify appropriate maintenance personnel.



Use and follow the appropriate Lockout/Tagout procedures as required by OSHA Standard 1910.147 when performing maintenance or servicing any electrical, hydraulic or pneumatic systems. See Appendix E for Lockout/Tagout procedures.



Before connecting or disconnecting from shore power, it is imperative that the shore power connections be moved to the "OFF" position. Failure to do this can result in injury or death to the operator of the mobile unit.



It is the operator's responsibility to verify that the shore power receptacle is of the same type and voltage as the connection that is supplied by Advanced Mobility Specialty Vehicles. Failure to do this can result in injury or death to the operator of the mobile unit as well as irreparable damage to the mobile unit.

The entire electrical system is installed in conformance with the National Electric Code.

The system is completely installed in the factory. Service access is gained through the underbody compartments of the mobile unit with thin wall conduit and/or wire-mold sized to accept the required service entrance conductors used throughout the mobile unit.

All electrical materials, devices, appliances, fittings, and other equipment are approved and listed by Underwriters' Laboratories, Inc. (UL).

All required tags, labels and rating nameplates are permanently installed in their proper locations before the mobile unit leaves the factory.

There are several panels used in the electrical system.

The Automatic Transfer Switch is located in the underbody compartments is responsible for all incoming power. A three-pole, 40-ampere AC Disconnect controls power to the 480:208V AC 30 KVA transformer also located in the underbody compartments between the ATS and the Transformer.

One 480V AC electrical distribution panel that is located in the lower compartment of the mobile unit. This panel is responsible for the air conditioning and heating components aboard the mobile unit including the PET / CT System.

One 120/208V AC distribution panel that is located behind the door of the Gantry Room in the mobile unit. This panel is responsible for all other AC powered components aboard the mobile unit.

7.1 System A1 Panel and 120/208V AC Electrical Panels (interior)

These electrical panels supply power to the equipment aboard the mobile unit. If a problem exists with the equipment, or the power supply to them, a circuit breaker will trip in order to prevent damage. On the inside of the panel access door, a listing of all the circuit breakers can be found.

Figure 24: 120/208V AC Electrical Panel



7.2 Automatic Transfer Switch (ATS) Panel (underbody)



WARNING Make sure that all electrical parts are serviced only by a certified electrician or qualified personnel. Dangerous voltages are present which could result in injury or death.



The ATS will automatically transfer to Shore Power when connected to a viable power supply and shut down the generator unit. In the event of a Shore Power fault, the ATS will automatically start the generator unit and transfer power to the generator.

The Automatic Transfer Switch is the 480V AC electrical panel that controls all incoming power to the mobile unit. From this location, the appropriate power supply is chosen and shore power monitored.



Figure 25: 480V AC ATS and Phase Power Monitor



WARNING Make sure that all electrical parts are serviced only by a certified electrician or qualified personnel. Dangerous voltages are present which could result in injury or death.

The Phase Power Monitor checks the incoming shore power to ensure that it has the correct phase rotation (ABC) and that all three phases are present. If all three phases are present and in the correct rotation, the 480 VAC Light, on the monitor, will illuminate.

If any phase is not present or if the phase rotation is not correct, the 480 VAC Fault Light will illuminate, a piezo-electric horn will sound and a flashing strobe light on the front of the unit illuminates. Disconnect shore power immediately and investigate to determine the cause of the fault.

The information contained in this booklet is the property of AMST. The contents are confidential. They may not be used, either partially or wholly, for any purpose inconsistent with the purpose for which it was produced. The contents may not be reproduced or disclosed without written permission of Advanced Mobility Specialty Vehicles.

7.3 Facility Power Connection



Figure 26: Shore Power Connection

Although the shore power connection is not an actual physical feature of the mobile unit, it is an integral part of the daily operations.

Advanced Mobility Specialty Vehicles Connector:

The plug that is provided by Advanced Mobility Specialty Vehicles for connection to the shore power receptacle.

Power Cable:

The cable that runs between the shore power connections and the 480V ac electrical panel.

Shore Power Disconnect:

The shore power disconnect terminates the power to the receptacle. This must be in the "OFF" position when connecting to the receptacle.

Shore Power Receptacle Outlet:

The receptacle outlet that the shore facility has installed for use with the Advanced Mobility Specialty Vehicles connector and power cable.

Shore Power Unit:

The complete shore power assembly.

<u>Circuit Breaker</u>	
Manufacturer:	Facility provided
Ampere Rating:	200 A disconnect

<u>Receptacle</u>	
Manufacturer:	Russellstoll
Model:	#DF 2504 FRAB0
Ampere Rating:	200 A

7.4 Power Cable

<u>Descriptions:</u>	<u>Specifications</u>
Service Amps:	150 A
5 Wire:	3 pole plus neutral and ground
Cord:	150 A, a #1/0 4 conductor type G, 600V – 2000V, 90° C, 45'-0" (13.71m) long
Plug Model	Russellstoll #DS2504MP000/DF2032



WARNING

The Power Cable could present a trip hazard that could result in personal injury. Care should be taken to ensure that the cable is routed properly to minimize its potential as a trip hazard.

Section 8: Generator



Use and follow the appropriate Lockout/Tagout procedures as required by OSHA Standard 1910.147 when performing maintenance or servicing any electrical, hydraulic or pneumatic systems. See Appendix E for Lockout/Tagout procedures.



Make sure that all electrical parts are serviced only by a certified electrician or qualified personnel. Dangerous voltages are present which could result in injury or death.



Always make sure that eyes are protected while servicing the unit. Wear safety goggles when prying, drilling, grinding, or working with batteries. Wear safety goggles over regular prescription glasses unless the lenses are made of hardened glass and can serve as safety goggles.



Be certain to disconnect the power before working on any of the electrical systems.



Before connecting or disconnecting from shore power, it is imperative that the shore power connections be moved to the "OFF" position. Failure to do this can result in injury or death to the operator of the mobile unit.



It is the operator's responsibility to verify that the shore power receptacle is of the same type and voltage as the connection that is supplied by Advanced Mobility Specialty Vehicles. Failure to do this can result in injury or death to the operator of the mobile unit as well as irreparable damage to the mobile unit.



Always inspect the power cable, connectors, and fasteners prior to usage. If during inspection, it is suspected that either internal or external damage has occurred, have a certified electrician inspect and repair the damage before using.



The GE medical system requires the HVAC system to be supplied power at all times. During transit of the mobile unit via the generator and when the unit is in the parked position via shore power.



The ATS will automatically transfer to Shore Power when connected to a viable power supply and shut down the generator unit. In the event of a Shore Power fault, the ATS will automatically start the generator unit and transfer power to the generator.



When servicing the unit be certain that a first aid kit and fire extinguisher are within reach at all times.

The mobile unit is equipped with a generator that is mounted in the lower compartment on the Driver's side of the unit. The generator supplies power to the unit during transport. The generator will not be able to support the medical system for scanning.

The generator oil, as well as the oil filter, air filter, and fuel filter must be changed every 250 hours or six months of service, whichever comes first. The number of hours the generator has been in operation can be obtained by checking the microprocessor located on top of the staging unit in the generator compartment.

Once a year, the fuel separator should be checked for contamination and accumulation.

For additional information, refer to the Advanced Mobility Specialty Vehicles VOL II Vendor Information binder for the product manual.



Figure 27: Generator Compartment



Kentucky Trailer
6370 Emerald Pkway, Ste.106
Monee, IL 60449
(708) 235-2800 main number
(708) 235-2002 fax

Custom Specialty Vehicles



GPCMI-3000-D10-48-00
Page 58 of 102

- 120V AC Power Outlet:** An additional outlet has been provided for the operator of the mobile unit to be used if needed.
- Air Filter:** The air filter is responsible for removing all contaminants from the generators air supply.
- Battery:** The battery is used to start the generator.
- Fuel Filter:** The fuel filter is responsible for removing all contaminants from the fuel supply.
- Fuel Pump:** Supplies the generator with fuel from the fuel tank.
- Generator Motor:** The actual motor of the generator.
- Microcomputer:** The microcomputer provides the operator with information that is needed for service purposes.
- Oil Filter:** The oil filter is responsible for removing all contaminants form the oil supply.

8.1 Automatic Transfer Switch (ATS)



The ATS will automatically transfer to Shore Power when connected to a viable power supply and shut down the generator unit. In the event of a Shore Power fault, the ATS will automatically start the generator unit and transfer the load to the generator. The control panel, located in the underbody compartment, is used to monitor and test the system. Refer to [Figure 25: 480V AC ATS and Phase Power Monitor](#).

Section 9: Humidity System



All settings for the humidity system are preset at the factory. Under no circumstances should factory presets be altered.



Proper humidity levels must be maintained to protect sensitive electronic equipment.

The humidifier is responsible for maintaining the humidity levels within the mobile unit. The settings for the humidifier are set to meet the medical system manufacturers' specifications. Under no circumstances should the settings of the humidifier be altered. In order for the humidifier to function properly, the water tank level must be maintained at all times.

- Exterior Connection: The facility must provide a fresh water supply for use with the mobile unit. The incoming supply is then attached to the connection.
- Humidifier: The humidifier provides the required humidity to the mobile unit per the medical manufacturers' requirements.
- Humidity Controller: The humidistat controls the internal humidity of the mobile unit. The setting is preset at the factory to comply with the medical system manufacturers requirements.
- Humidity Sensor: Maintains an accurate reading of the humidity levels inside of the mobile unit.

9.1 System Operation

The humidifier system is capable of producing up to 6 pounds of steam per hour, at 15 amps. A sensor continually monitors the interior of the mobile unit for relative humidity. This sensor is located in the HVAC return duct and is programmed to keep the relative humidity at 35%. If the humidity drops below the set point, the humidifier is signaled to emit more steam. The humidifier creates steam when electrodes in the steam cylinder of the humidifier vaporize the supplied water. The steam then travels through a hose to a distribution pipe located in the return air duct of the HVAC system. Since the steam is injected into the return duct of the HVAC system, both A/C units are supplied with humidified air for distribution throughout the interior of the mobile unit. An air pressure switch is located in the HVAC discharge duct that is interlocked to the humidifier. If for any reason the airflow is disrupted, the humidifier will shut down. When the sensor detects that relative humidity has been reached, a signal is sent to the humidifier to stop it from creating more steam.

9.2 Water Supply

Water is supplied to the humidifier by means of a facility provided water supply. Plumbing connections are as follows:

One 1" female garden hose coupling for the water supply from the exterior of the mobile unit. (incoming)

One 0.5" outer diameter copper drain line from the steam cylinder for automatic drain cycles. The drain penetrates the floor of the mobile unit in order to empty to the exterior. (drainage)

9.3 Humidity Controller



All settings for the humidity system are preset at the factory. Under no circumstances should factory presets be altered.

The humidity controller is located in cold air return above the partition Z wall. The relative humidity setting for the mobile unit is 35%. The humidifier must not be altered from its factory setting.



Figure 28: Humidity Controller

9.4 Humidity Settings



All settings for the humidity system are preset at the factory. Under no circumstances should factory presets be altered.

The humidity low set point is 35% RH (relative humidity).

The humidity high set point is 45% RH (relative humidity).



Kentucky Trailer
6370 Emerald Pkway, Ste.106
Monee, IL 60449
(708) 235-2800 main number
(708) 235-2002 fax

Custom Specialty Vehicles



GPCMI-3000-D10-48-00
Page 62 of 102

9.5 Electrical Connections

Electrical connections at the humidifier are located on a terminal rail behind the cover of the humidifier.

The distribution panel supplies the required 480V AC power via a 15 amp, three-phase breaker.

A humidistat is connected to the humidifier via a controlling transformer cable.

9.6 Instructions

The HVAC system along with the humidifier is set to the required settings per the medical equipment manufacturers' specifications before leaving the factory. Under no circumstances should the settings be altered from their factory specifications.

Please refer to the product manual located in the literature provided by Advanced Mobility Specialty Vehicles.

Attaching the water supply lines

A water connection can be found on the right side exterior of the mobile unit. This connection is located near an underbody compartment door.

Remove the cap that covers the connection.

Attach the supplied water hose to this connection.

Attach the other end of the hose to facility provided faucet.

Turn on the water at the faucet.

Section 10: HVAC System



The HVAC system is critical to the operation and life of the medical system. The medical system operates within strict specifications regarding temperature and humidity. All aspects of the HVAC system such as damper settings, venting, component set points, and sensor placement are adjusted for optimum operation. Under no circumstances should these settings be altered.



The GE medical system requires the HVAC system to be supplied power at all times. During transit of the mobile unit via the generator and when the unit is in the parked position via shore power.



Figure 29: A/C Unit

One air conditioning unit is used to maintain the internal environment of the mobile unit. The air conditioner come from the factory preset to the specifications required by the medical system manufacturer. Under no circumstances should the factory presets be changed or altered from their factory setting. Irreparable damage can occur to the medical system if this is done.

The HVAC system is designed specifically to maintain only the internal environment of the mobile unit. The HVAC system is not designed to handle areas outside of the mobile unit, such as adjoining corridors or hallways. It is important to keep all exterior doors closed at all times. All interior doors, computer doors, partitions, and damper settings, must be in the intended positions before running the medical equipment. Do not attempt to store any boxes or items in the mobile unit, as this will interrupt the intended airflow requirements.

In order to ensure proper operation of the HVAC system at all times, refer to [Section 16: General Maintenance](#) and [Section 17: Specific Maintenance](#).

10.1 System Specifications and Descriptions

The HVAC system is completely designed and installed in full conformance with all applicable codes.

The HVAC system utilizes forced air.

The HVAC utilizes electricity as the source of power.

Heat producing appliances must be approved by Underwriters Laboratories, Inc. (U.L.) and installed in accordance with the terms on their listings.

The air ducts are constructed of approved materials and installed in conformance with all applicable codes.

Air conditioning and heating registers are installed in accordance with the approved plans.

Return air is provided as required and is in full conformance with all applicable codes.

All warning and identification labels as required are installed at the factory.

All aspects of the HVAC system such as damper settings, venting, component set points, and sensor placement are adjusted for optimum operation. Under no circumstances should these settings be altered.

Two separate and individually controlled units provide air conditioning and heating for the mobile unit.

The air conditioning ductwork is lined with a sound absorbent material for reduced noise and operator and patient comfort.

10.2 Exterior HVAC Specifications

The HVAC system is designed to work within certain limitations. The ambient exterior temperatures must be within the range of -20°F to 110°F.

10.3 Interior HVAC Specifications

The air conditioner has a cooling capacity of 94,500 BTUH. The temperature in each room is maintained at approximately 70°F with an acceptable range of 68° to 72°F. Both air conditioned and heated air is distributed through an insulated duct which starts at the discharge side of the air conditioner.

A heating controller is provided to help regulate the heat. The controller incorporates a preset sensor, which activates heat strips in the air conditioning unit. The heat will activate when the temperature drops below 68°F. When the temperature rises above this setting, the heat strips will deactivate. The controller is located in the in the return air duct vent. The controller is powered by a 12V terminal block located in the air conditioning unit, and is wired using standard 5c wire.

Air is returned to the air conditioner via ceiling vents located throughout the mobile unit. Each duct is strategically placed over the equipment for adequate ventilation. These return air ducts are located in each room and draw air from all rooms.

Two 20" x 30" x 1" fiber core air filters are provided at the air return duct of each air conditioning and heating unit. This filter provides dust free air throughout the interior of the mobile unit. The air filter is accessible through an access door on the front of the plenum.

10.4 Underbody Compartment Heater

Located in the underbody compartments are two (2) compartment heaters. These heaters provide 3KW of heat each at 120V AC, single phase. The compartment heater will activate when the temperature drops below 40°F and will deactivate when the temperature rises above approximately 45°F.

All aspects of the underbody have been insulated for all weather usage.



Figure 30: Heater (Typical)

10.5 Thermostat Temperature Setting



The HVAC system is critical to the operation and life of the medical system. The medical system operates within strict specifications regarding temperature and humidity. All aspects of the HVAC system such as damper settings, venting, component set points, and sensor placement are adjusted for optimum operation. Under no circumstances should these settings be altered.

The temperature settings for each room are controlled by the use of Thermostat Controls. The Thermostat Control for each room must not be set outside of the parameters as defined by the medical system manufacturer. The Control Room Thermostat controls the temperature in the Control Room and the Hot Lab.



Scan Room Control



Control Room/Hot Lab Control

Figure 31: Temperature Controls

Section 11: Platform Lift

The mobile unit contains a Platform Lift that is used to move personnel and equipment from the ground level to the floor level of the mobile unit. The Platform Lift has a maximum capacity of 2000 and a maximum height of 53”.

In the illustrations below, the Platform Lift can be seen in various stages.

These pictures are meant to represent the Platform Lift in different stages and not to accurately reflect the current design of the mobile unit.



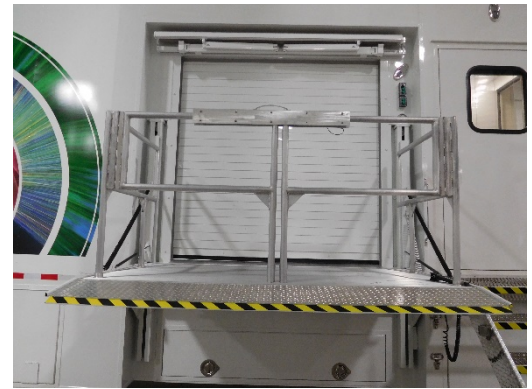
Transport Position



Lowered



Handrails Installed



Raised

Figure 32: Hydraulic Platform Lift

In the following illustrations, the lift pocket micro switch can be seen. The micro switches are connected in series to a Control Relay (CR#). If CR# is not energized the transport warning light will illuminate and a strobe light will flash if emergency air is connected to the trailer. These devices are used to notify the operator of the hydraulic platform lift status during transport. CR# also removes power from the lift hydraulic system when all three micro switches are actuated.

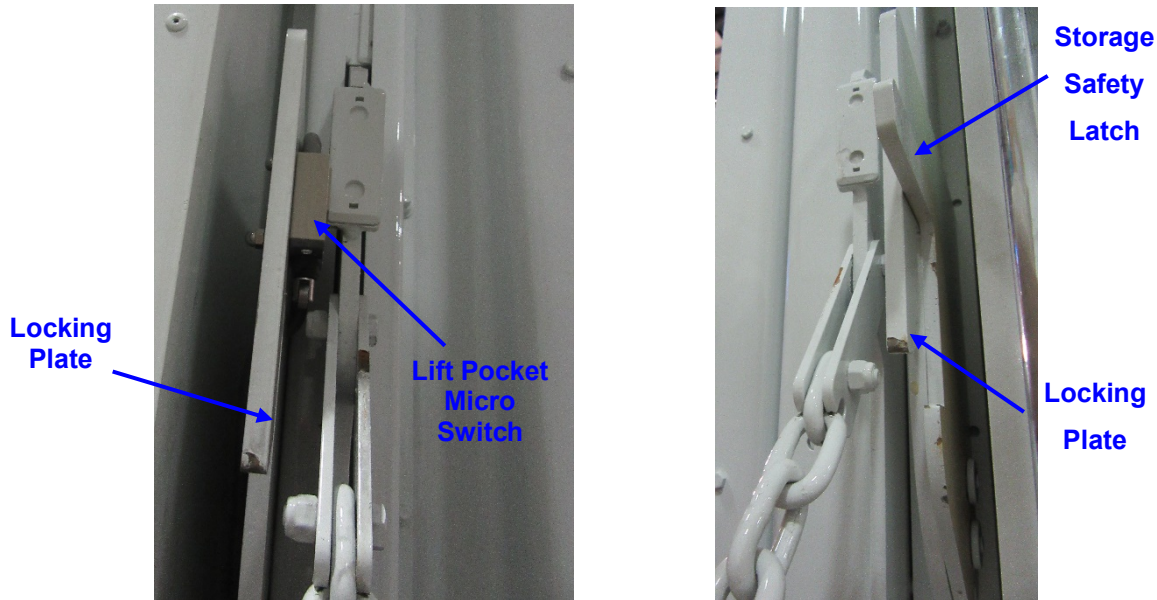


Figure 33: Locking Plates

111.1 Safety Features

The hydraulic platform lift has several built in safety features that are designed to provide worry free operation and transportation.

11.1.1 Lift Controls

The hydraulic platform lift controls are located on the exterior of the mobile unit next to the roll door. The lift controls, including the remote control pendants, operate with open contacts. This means that in order for the hydraulic platform lift to be moved upwards or downwards, the control must be held in the desired position.

11.1.2 Handrails

The hydraulic platform lift is supplied with handrails designed to provide an additional margin of safety for personnel being raised or lowered by the lift. The handrails must be installed and properly latched in place prior to raising or lowering personnel on the lift.



It is the Operator's responsibility to ensure that the handrails are properly installed and latched in place prior to raising or lowering personnel on the lift. Failure to do so could result in serious personal injury or death.

11.1.3 Lift Up Indicator Light

On the control panel located inside of the mobile unit, a separate set of controls can be found to operate the roll door. On this panel is a small green indicator light. When the lift is in the raised position the indicator light will illuminate.



It is the Operator's responsibility to ensure that the roll door is not opened unless the lift is in the raised position. Failure to do so could result in serious personal injury or death.

The roll door should not be opened unless this light is on. This light is designed to prevent the operator or other personnel from inadvertently stepping out of the roll door when the hydraulic platform lift is not raised.

111.1.4 Remote Control Pendant

Two remote control pendants are included for use with the hydraulic platform lift. One pendant plugs into a jack located between the staff entry door and the hydraulic platform lift roll door behind the lift control panel. The other is hard wired and is located behind the lower compartment door rearward of the lift. The pendants have expandable cords that allow the operator to be on or near the hydraulic platform lift while it is in operation. The remote control pendants work off the 12V DC power system. **Note:** *For operator safety, the removable control pendant only has Up/Down capabilities. For deploying and stowing the platform the hard wired pendant must be used.*

111.1.5 Transport Warning Light



If the Transport Warning Light is on, the mobile unit must not be moved. If the mobile unit is moved while this light is on, irreparable damage to the mobile unit, serious injury or death can occur.

The Transport Warning Light is located on the exterior left side of the mobile unit and will illuminate when the hydraulic platform lift is not in the proper transport position or if the Generator Vibration Isolation Mounts are unlatched. It is the Operator's responsibility to ensure that the Transport Warning Light is functioning properly and that the bulb element is in working order.

Please refer to the Advanced Mobility Specialty Vehicles VOL II Vendor Information binder for the product manual, the Advanced Mobility Specialty Vehicles VOL I Service/Operation Manual binder for a list of local service representatives, or contact Advanced Mobility Specialty Vehicles for service.

11.1.6 Transport Warning Strobe Light



If the Transport Warning Strobe Light is flashing the mobile unit must not be moved. If the mobile unit is moved while this light is flashing, irreparable damage to the mobile unit, serious personal injury or death can occur.

The Transport Warning Strobe Light is located on the exterior left side of the mobile unit and will illuminate when the hydraulic platform lift is not in the proper transport position. It is the Operator's responsibility to ensure that the Transport Warning Light is functioning properly and that the bulb element is in working order.

Please refer to the Advanced Mobility Specialty Vehicles VOL II Vendor Information binder for the product manual, the Advanced Mobility Specialty Vehicles VOL I Service/Operation Manual binder for a list of local service representatives, or contact Advanced Mobility Specialty Vehicles for service.

11.1.7 Lift Transport Restraining Cable

The lift Transport Restraining Cable, when installed and connected securely, is designed to provide a stop gap measure to prevent the lift from falling to the horizontal position should the lift be improperly stowed.

11.2 Hydraulic System

An internal hydraulic cylinder controls the movement of the Platform Lift. The cylinder is located in the compartment below the roll door.

11.2.1 Operation

When the "UP" function has been selected for the Platform Lift, the pump is activated and fluid is moved from the reservoir through the valve block to the hydraulic cylinder. This causes the lift to move upward. When the "DOWN" function has been selected for the Platform Lift, the pump is not activated, but the fluid is moved from the hydraulic cylinder through the valve block to the reservoir. This causes the Platform Lift to descend.

11.3 Platform Lift Operation

The Platform Lift can be operated with the remote control pendant, the exterior lift controls, or the interior lift controls. The lift can be raised or lowered with these controls. In order to deploy the Platform Lift when setting up the mobile unit, or to place the Platform Lift in its storage position for transporting the mobile unit, refer to the steps outlined below. This same information can also be found under the setup and transport procedures for the mobile unit.

11.3.1 Deploying the Hydraulic Platform Lift for use with the Mobile Unit

After the stair assembly has been installed, the hydraulic platform lift can be deployed for use.

1. Open the underbody compartment doors.
2. Remove the handrails and lift pendant, and place them to the side for now.
3. Close the underbody compartment door.
4. Located next to the roll door, are the controls for the hydraulic platform lift. Insert the connector from the lift control pendant into the receptacle that is located on this control panel. **Note:** *For operator safety, this control pendant only has Up/Down capabilities. For deploying and stowing the platform the hard wired pendant must be used. It is located behind the compartment door rearward of the platform lift.*
5. Clear the platform sliding path by moving the storage safety latch manually. Hold the safety latch down manually with one hand and press the **Down** button on the control with the other hand until the platform locking ears clear the safety latch. Release the safety latch back to its original place.
6. Open the platform by pressing and holding the **Shift** and **Down** buttons simultaneously. **NEVER STAND DIRECTLY UNDER THE PLATFORM!** Press and hold the down button to lower the platform complete to the ground.
7. Once the platform has been lowered, install the handrails and secure them with the hardware provided.

11.3.2 Storing the Hydraulic Platform Lift for Transport of the Mobile Unit

1. Lower the hydraulic platform lift to the ground.
2. Remove the restraining hardware and handrails and temporarily place them to the side.
3. Press the **Up** button to raise the platform approximately 12" from the ground.
4. Press and hold the **Shift** and **Up** buttons simultaneously until the platform is parallel to the columns.
5. Press the **Up** button to raise the platform until the platform locking ears are positioned in the locking plate and the storage safety lock is engaged.
6. Remove the remote control pendant from the socket and lock the access door to the hydraulic platform lift controls. **Note:** *For operator safety, this control pendant only has Up/Down capabilities. For deploying and stowing the platform the hard wired pendant must be used. It is located behind the compartment door rearward of the platform lift.*
7. Open the underbody compartment door and store the remote control pendant and handrail assembly in the underbody storage compartment.



Kentucky Trailer
6370 Emerald Pkway, Ste.106
Monee, IL 60449
(708) 235-2800 main number
(708) 235-2002 fax

Custom Specialty Vehicles



GPCMI-3000-D10-48-00
Page 72 of 102

Section 12: Intrusion Alarm (optional)

An optional intrusion alarm is available for the mobile unit. This alarm is designed to divert would be intruders from theft, vandalism, or unauthorized entrance of the mobile unit.



Figure 34: Intrusion Alarm Keypad

12.1 Operation

The alarm is operated via a keypad located by the staff door. When entering the mobile unit, the operator keys in a code to deactivate the alarm. When leaving the mobile unit, the operator keys in a code to activate the alarm. If either the entry door or the compartment doors are opened while the alarm is activated, a siren will sound.

For additional information, refer to the Advanced Mobility Specialty Vehicles VOL II Vendor Information binder for the product manual.

Section 13: Stabilizing Legs



Under no circumstances should the stabilizing legs and the rear air suspension be used to lift the mobile unit from the ground. If any attempt is made to raise the unit from the ground using the only the stabilizing legs and the rear air suspension, serious damage can occur to the suspension system of the mobile unit.

Both the stabilizing legs and the auxiliary support legs can be found at the front and rear of the unit. The stabilizing legs installed on this mobile unit are only for the purpose of parking and stabilizing the mobile unit. Please refer to the product manual located in Volume II of the literature provided by Advanced Mobility Specialty Vehicles for additional information.



Figure 35: Front Stabilizing Leg Assembly

Stabilizing Leg Controls:	The control box houses the stabilizing leg controls.
Stabilizing Leg:	Allows the mobile unit to be parked without the tractor being attached to the unit.
Digital Levels:	Allows the mobile unit to be leveled both front to back and side to side.
Lever left Leg:	Front Left side leg.
Lever Right Leg:	Front Right side leg.
Air Suspension Control Switch	The "ON" position deflates the air bags. The "OFF" position inflates the air bags for normal ride.
Pump ON / OFF Switch	The switch must be held in the ON position when extending or retracting the legs.
Auxiliary Support Legs:	The auxiliary support legs provide a fixed leg for use as a backup in case the stabilizing legs fail.
Sand Shoe:	Helps prevent the stabilizing legs from sinking due to weight.

13.1 Stabilizing Stands

The stabilizing stands are inserted beneath the rear supports of the mobile unit, and allow the mobile unit to be stabilized for all medical procedures. The stands are stored in the rearmost underbody compartments. When in use, the stands must be centered underneath the rear supports of the mobile unit. If shims are needed, use only the aluminum shims provided.

13.2 Rear Air Suspension System Controls



If the rear air suspension is not functioning properly the mobile unit must not be moved. If the mobile unit is moved, irreparable damage can occur to the medical system and the mobile unit itself.

The rear air suspension controls are located in the hydraulic compartment on this control panel a switch plate that reads Deflate and "Normal Ride".

RAISE: (to install Stands)

When the switch is in the Normal Ride position the rear air suspension will inflate and raise the rear of the unit. This must be done to insert the stabilizing stands.

DEFLATE: (For Set up only)

When the switch is in the Deflate position, the suspension will deflate and the mobile unit will lower. Prior to placing the selector in this position, the rear stabilizing stands must be inserted.

NORMAL RIDE: (For Transport)

When the switch is in the Normal Ride position, the rear suspension will inflate and the mobile unit will automatically rise to transport height. Failure to turn the selector to the Normal Ride position prior to transporting the mobile unit can cause irreparable damage to both trailer and Medical system.



Figure 36: Air Bag Controls

Section 14: Lighting System

The lighting provided for the mobile unit can be divided into either interior lighting, or exterior lighting. Listed below is an explanation of the lighting system.

14.1 Emergency Lighting

In the event that the main AC power fails, two emergency lights are provided. These lights will automatically illuminate when the main AC power is lost. The lights are located in the Control Room and Gantry Room. The emergency lighting system is wired into a 120V AC electrical system that allows the lights internal circuitry to keep its batteries at 100% charge. The emergency lights will illuminate the staff door in Gantry Room and last for approximately 90 minutes.



Control Room Emergency Light



Gantry Room Emergency Light

[Figure 37: Dual Beam Emergency Lighting](#)

14.2 Exterior Lighting

IMPORTANT

All warning lights are located on the left side of the mobile unit.

The exterior lighting system can be divided as follows. For additional information of the warning lights Please refer to [Appendix B: Troubleshooting](#).

14.2.1 Underbody Compartment Lighting

Located inside of the underbody compartments there are wall mounted halogen lights connected to timers. The timers allow the lights to be set for up to 30 minutes before automatically turning off. There is one light provided on each side of the underbody.



Figure 38: Compartment Light

In addition, since the fuel compartment is sealed off from the others, a push button dome light has been included in this compartment.

14.2.2 Service Lighting

An optional cord-o-matic drop light with a 50'-0" cable may be supplied with the mobile unit. There are two droplights available for the mobile unit, the first is to be found in Equipment Room and the other is to be found in the underbody storage compartments. The light is generally used during service applications when additional light is required. The light is plugged into a nearby miscellaneous 120V AC outlet.

14.2.3 Entry Door Lighting / Exterior Service Lighting

The Entry door lighting is provided by a fixture that is located above the staff entry door.

This light is meant to illuminate the entry as well as the Platform Lift.

The switch for this light is located inside of the mobile unit on the raceway next to the entry door.

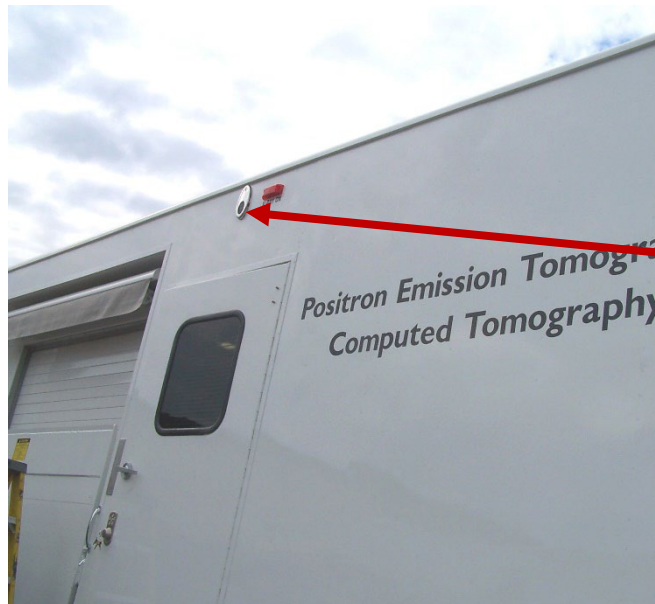


Figure 39: Entry Door Lighting

14.2.4 Marker & Running Lights

When the mobile unit is in transit, federal law requires specific illumination characteristics. The mobile unit meets and exceeds these standards as outlined in Motor Vehicle Safety Standards Guide, Federal Safety Standard No. 108-4.

All lights are 12V DC, and are powered by the tractor. All wiring is run through the underbody wire harnesses. The top marker lights are wired through a 0.5" loom pipe that is run through the sidewalls of the mobile unit. The wires terminate at the "glad-hands" which are located in the front of the mobile unit for tractor hookup. Two electrical connections are supplied on the "glad-hands", one six terminal connection and one seven terminal connection.

14.3 Interior Lighting

The interior lighting system can be divided as follows.

14.3.1 Control Room

The light controls for the lighting in Control Room are located just inside the access door to that leads into Control Room. Recessed light fixtures are located in the ceiling panels and have been strategically placed for effective illumination of the equipment both during operation and while being service.



Figure 40: Control Room Overall Lighting

14.3.2 Gantry Room

The light controls for the lighting in Gantry Room are located just inside the access door to that leads into Control Room. Recessed light fixtures are located in the ceiling panels and have been strategically placed for effective illumination of the equipment both during operation and while being service.



Figure 41: Gantry Room Overall Lighting

14.4 Warning Lights



Figure 42: Warning Lights

Warning lights have been installed on the exterior left side of the mobile unit in order to provide the operator and technician of the status of the mobile unit at all times during transit or while in the parked position. A description of each of the warning lights and their location can be found below. If any of the warning lights are illuminated, please refer to [Appendix B: Troubleshooting](#) for additional information.

14.4.1 AC Power Indicator Light



The GE medical system requires the HVAC system to be supplied power at all times. During transit of the mobile unit via the generator and when the unit is in the parked position via shore power.

The AC Power Indicator Light is located on the exterior left side of the mobile unit and will illuminate when the mobile unit is receiving power.

The mobile unit must have power at all times.

14.4.2 Transport Light

The Transport Light is located on the exterior left side of the mobile unit and will illuminate when the mobile unit is safe to transport.

14.4.3 Transport Warning Light



If the Transport Warning Light is on, the mobile unit must not be moved. If the mobile unit is moved while this light is on, irreparable damage to the mobile unit, serious injury or death can occur.

The Transport Warning Light is located on the exterior left side of the mobile unit and will illuminate when the Platform Lift is not in the proper transport position. It is the Operator's responsibility to ensure that the Transport Warning Light is functioning properly and that the bulb element is in working order. Please refer to the Advanced Mobility Specialty Vehicles VOL II Vendor Information binder for the product manual, the Advanced Mobility Specialty Vehicles VOL I Service/Operator Manual binder for a list of local service representatives, or contact Advanced Mobility Specialty Vehicles for service.

Section 15: Slide-outs

This section contains important information in regards to general safety guidelines that must be followed at all times. Before servicing the mobile unit, read the section on safety and all other sections on safety found in any OEM supplied literature. The OEM supplied literature can be found in the product information binders that have been included with the mobile unit.

15.1 Slide-out Controls

The controls for the slide-outs are located in Gantry Room. One button for each slide-out controls both extend and the retract movements.

When extending or retracting the slide-outs, please follow the instructions below:

15.1.1 Expanding the Slide-outs

1. After the stair assembly has been deployed the slide-outs for the mobile unit can now be extended.
2. Verify that the underbody compartment doors are closed and that no obstacles are in the path of the slide-outs.
3. Enter the mobile unit and remove the restraining hardware that is being used to hold the slide-outs in the transport position.



Do not release the floor latch if the slide-out is extended. The floor cylinder is pressurized when the slide-out is extended and releasing the latch could result in severe personal injury.

4. Release the hardware that is being used to hold the slide-out floors in place.
5. Extend the left side slide-out.
6. Extend the right side slide-out.
7. Verify that the slide-outs are in the extended position and that the floors have been completely lowered.

15.1.2 Retracting the Slide-outs

After the equipment has been secured in the transport position the slide-outs can now be retracted.

1. Verify that the underbody compartment doors are closed and that no obstacles are in the path of the slide-outs.
2. Verify that the slide-outs are completely extended.

IMPORTANT

Before retracting the slide-outs, run the slide-outs to the fully extended position. This will ensure that the air cylinders that actuate the floor sections are pressurized and prevent binding of the floor sections.

3. Retract the right side slide-out.
4. Retract the left side slide-out.
5. Secure the slide-out floors into the transport position with the supplied hardware.
6. Secure the slide-outs with the ratcheting strap provided.



Slide-out Control Switches and Slide-out Emergency Stop Button

Figure 43: Slide-out Controls

Section 16: General Maintenance



Use and follow the appropriate Lockout/Tagout procedures as required by OSHA Standard 1910.147 when performing maintenance or servicing any electrical, hydraulic or pneumatic systems. See Appendix E for Lockout/Tagout procedures.



Make sure that all electrical parts are serviced only by a certified electrician or qualified personnel. Dangerous voltages are present which could result in injury or death.



Always make sure that eyes are protected while servicing the unit. Wear safety goggles when prying, drilling, grinding, or working with batteries. Wear safety goggles over regular prescription glasses unless the lenses are made of hardened glass and can serve as safety goggles.



Be certain to disconnect the power before working on any of the electrical systems.



When servicing the unit be certain that a first aid kit and fire extinguisher are within reach at all times.

16.1 Daily Maintenance

Fuel tank should be checked for proper fuel levels.

During cold weather, verify that all underbody heaters are operational.

Keep the air intake grills on the computer cabinets for the medical system free and clear of obstructions.

Keep the A/C grills clean and free of debris.

Check and verify that no warning lights are illuminated.

16.2 Weekly Maintenance

Lubricate the hydraulic platform lift side rails and pivot points with an ample amount of ZEP 2000, AMST Part Number 6100811.

Check the A/C filters and replace if necessary.

Check the oil and water levels in the generator and refill if necessary.

Check the electrolyte levels in the DC batteries and fill if necessary using only distilled water.

Check all running lights, marker lights, brake lights, and turn signals.

A qualified technician should check tire pressure and verify that all wheels are at the correct pressure as specified by the tire manufacturer.

Check the fluid level in the hydraulic reservoir using the site glass. Add fluid if necessary. Use only AWF, all weather, fluid Automatic Transmission Fluid.

16.3 Monthly Maintenance

Lubricate the side rails of the roll door with Mobil – Mobilith AW2 heavy-duty multipurpose industrial grease.

Lubricate all Gantry Room interlock switches.

Put a few drops of 20W oil, or similar graphite oil, on the swivel pin of all door hinges. Only use dry graphite on key openings of all door locks.

Check the operation of the smoke detectors and vacuum internally.

Check the fire extinguisher gauges for safe charges.

Inspect the power cables for any damage.

Check the cable tie downs.

Check for cut, damaged, or loose wire connections.

Check and verify that all connector bolts are tight and secure.

A qualified A/C technician must check the A/C condensers every month. Refer to the Air Conditioning Owner's Manual for more information.

Lubricate the front stabilizing legs.

Check wheel lug nuts with torque wrench and verify that all inner and outer wheels, both the front and rear, are tightened to 450-500 foot pounds. This must be done after every 500 miles of driving. In accordance with torque procedure, lugs and nuts must be installed dry. Do not use any type of lubricant.

16.4 Quarterly Maintenance

Check wheel lug nuts with torque wrench and verify that all inner and outer wheels, both the front and rear, are tightened to 450-500 foot pounds. This must be done after every 500 miles of driving. In accordance with torque procedure, lugs and nuts must be installed dry. Do not use any type of lubricant.

A copy of your vehicles completed quarterly Preventive Maintenance Checklist may be required for warranty reimbursement.

Advanced Mobility Specialty Vehicle's Service department has certified technicians, genuine parts and the information technology needed for your assistance. Please call Advanced Mobility service for your servicing needs.

Thank you for choosing Advanced Mobility Specialty Vehicles. If you have any questions call us toll free at 1-708-235-2800. We'll be happy to assist you!!

Section 17: Specific Maintenance



Use and follow the appropriate Lockout/Tagout procedures as required by OSHA Standard 1910.147 when performing maintenance or servicing any electrical, hydraulic or pneumatic systems. See Appendix E for Lockout/Tagout procedures.



Make sure that all electrical parts are serviced only by a certified electrician or qualified personnel. Dangerous voltages are present which could result in injury or death.



Always make sure that eyes are protected while servicing the unit. Wear safety goggles when prying, drilling, grinding, or working with batteries. Wear safety goggles over regular prescription glasses unless the lenses are made of hardened glass and can serve as safety goggles.



Be certain to disconnect the power before working on any of the electrical systems.



The HVAC system is critical to the operation and life of the equipment. The medical equipment operates within strict limits regarding temperature and humidity. All aspects of the HVAC system such as baffling, venting, component set points, and sensor placement are adjusted for optimum operation. Under no circumstances should any aspect of the HVAC system be altered from factory specifications.



Image quality can be impaired with improper door closer adjustment.



A power washer should never be used to clean the A/C units. Serious damage to the A/C coils may occur.



When servicing the unit be certain that a first aid kit and fire extinguisher are within reach at all times.

17.1 Door Closer Adjustments

The door closer must be adjusted so that the door does not slam shut. Refer to the door closer component sheet in the component literature manual for proper adjustment. Adjust door closer as required to insure proper non-slamming door action.

17.2 Electrical System

Inspect the power cables for any damage.

Check the cable tie downs.

Check for cut, damaged, or loose wire connections.

Check and verify that all connector bolts are tight and secure.

17.3 Generator System

The generator oil, as well as the oil filter, air filter, and fuel filter must be changed every 250 hours or six months of service, whichever comes first. The number of hours the generator has been in operation can be obtained by checking the microcomputer controller located on top of the staging unit in the generator bay. Please refer to refer to [Figure 27: Generator Compartment](#).

Once a year, check the fuel separator for contamination or debris.

17.4 Humidity System



During seasons of low humidity, the humidifier will need to be filled more often.

The fresh water tank supplies the humidifier with water. The water level must be maintained at all times.

Check the water tank to determine the water level.

Open the overflow valve.

Attach one end of a hose to the exterior water tank fill valve and the other end to the shore supply.

Turn on the water source to begin filling the tank.

After the water tank is full, turn off the water source.

Detach the hose at both ends and place in the underbody storage compartments.

Turn off the overflow control valve.

17.5 HVAC System



The HVAC system is critical to the operation and life of the equipment. The medical equipment operates within strict limits regarding temperature and humidity. All aspects of the HVAC system such as baffling, venting, component set points, and sensor placement are adjusted for optimum operation. Under no circumstances should any aspect of the HVAC system be altered from factory specifications.

The HVAC system is designed specifically to maintain only the internal environment of the mobile unit. The HVAC system is not designed to handle areas outside of the mobile unit such as adjoining corridors or hallways.

It is important to be sure that the doors, partitions, and baffling are in the intended positions before running the medical system.

Do not attempt to store boxes, or any other items near computer system air inlets or in the aisles. Such actions will disrupt the intended airflow requirements.

A qualified A/C technician must check the A/C condensers every month. Refer to the Air Conditioning Owner's Manual for more information.



Kentucky Trailer
6370 Emerald Pkway, Ste.106
Monee, IL 60449
(708) 235-2800 main number
(708) 235-2002 fax

Custom Specialty Vehicles



GPCMI-3000-D10-48-00
Page 88 of 102

17.6 Platform Lift

Lubricate the hydraulic platform lift side rails and pivot points with an ample amount of ZEP 2000, AMST Part Number 6100811, on a weekly basis.

17.7 Stabilizing Legs

Once a year, perform the preventative maintenance on the stabilizing legs and the stabilizing leg controls. Refer to the accompanying manual for the stabilizing gear system.

Change the oil in the stabilizing leg control box and refill with six (6) quarts of PG-AWF or other approved fluid to port level.

Add one pint of permanent anti-freeze as necessary.

Extend the stabilizing legs and coat lightly with clean grease.

Grease the alemite fittings and check the valve on each leg. Use "NGLI" lithium grease with a grade of "00" or "0".

Check the fittings and the hydraulic lines for leaks or worn spots. Replace all defective fittings and lines as necessary.

Check for loose bolts and nuts. Tighten as necessary.

Appendix A: Mobile Unit Checklist



It is the operator's responsibility to verify that the shore power receptacle is of the same type and voltage as the connection that is supplied by Advanced Mobility Specialty Vehicles. Failure to do this can result in injury or death to the operator of the mobile unit as well as irreparable damage to the mobile unit.



Before connecting or disconnecting from shore power, it is imperative that the shore power connections be moved to the "OFF" position. Failure to do this can result in injury or death to the operator of the mobile unit.



The Power Cable could present a trip hazard that could result in personal injury. Care should be taken to ensure that the cable is routed properly to minimize its potential as a trip hazard.



Make sure that all electrical parts are serviced only by a certified electrician or qualified personnel. Dangerous voltages are present which could result in injury or death.



Always make sure that eyes are protected while servicing the unit. Wear safety goggles when prying, drilling, grinding, or working with batteries. Wear safety goggles over regular prescription glasses unless the lenses are made of hardened glass and can serve as safety goggles.



Be certain to disconnect the power before working on any of the electrical systems.



The GE medical system requires the HVAC system to be supplied power at all times. During transit of the mobile unit via the generator and when the unit is in the parked position via shore power.



Always inspect the power cable, connectors, and fasteners prior to usage. If during inspection, it is suspected that either internal or external damage has occurred, have a certified electrician inspect and repair the damage before using.



The stabilizing legs and rear suspension are not to be used to raise the mobile unit off the ground. The legs are meant only to level the unit and place it in a parked position. If the legs are used in an attempt to raise the mobile unit from the ground, serious damage may occur to the mobile unit.



Failure to completely exhaust the suspension before uncoupling the airlines may result in damage to the suspension of the mobile unit.



The air ride control valves must be in the normal ride position before the mobile unit can be transported. If the air ride control switch is not in the normal ride position, irreparable damage may occur to the mobile unit.



Before transporting the mobile unit, check to verify all warning lights as well as all exterior marker lights are working correctly.



When servicing the unit be certain that a first aid kit and fire extinguisher are within reach at all times.



Kentucky Trailer
6370 Emerald Pkway, Ste.106
Monee, IL 60449
(708) 235-2800 main number
(708) 235-2002 fax

Custom Specialty Vehicles



GPCMI-3000-D10-48-00
Page 90 of 102

Mobile Unit Setup Checklist

Park the mobile unit on the pad per the site-planning guide. Set the trailer parking brake.

Lower the front stabilizing legs.

Disconnect the tractor while leaving the air and electrical lines engaged.

Raise the rear of the mobile unit high enough to install the rear stabilizing stands.

Exhaust the rear suspension.

Re-level the mobile unit as needed. Refer to Appendix F: Leveling the Mobile

Disconnect the tractor air and electrical lines.

Lower the auxiliary support legs.

Verify that the shore power disconnect is in the "OFF" position and connect to the power cable to the shore power receptacle.

Move the shore power disconnect to the "ON" position. The ATS will automatically switch from generator power to shore power.

Connect the phone and data lines.

Connect the water supply connection.

Install the stair assembly.

Deploy the Platform Lift.

Remove all slide-out restraining hardware.

Expand the slide-outs.

Check for any warning lights.

Prepare all medical equipment for use per the OEM provided instructions.

Mobile Unit Transport Checklist

Retract the canopy, if equipped.

Secure all equipment, this includes all medical equipment per OEM requirements

Secure all moveable objects such as chairs, monitors, doors, cabinets, cameras, and printers

First verify the slide-outs are fully expanded and then retract the slide-outs

Secure the slide-outs and slide-out floors with hardware provided.

Return the Platform Lift to the transport position.

Insert the Lift Transport Pin securely in place.

Remove and store the stair assembly.

Move the shore power disconnect to the "OFF" position and disconnect to the power cable from the shore power receptacle. The generator will automatically start and supply power to the unit.

Disconnect the phone and data lines.

Disconnect the water supply connection.

Raise the auxiliary support legs.

Connect the tractor air and electrical connections.

Return the rear suspension selector switch to the "OFF" position for transport in order to inflate the rear air bags to remove the stabilizing stands.

Remove and store the stabilizing stands and store them in the underbody compartment.



Before moving the trailer, the driver must ensure that the rear stabilizing stands have been removed and stored in the underbody compartment. Failure to do so could result in damage to equipment, and/or severe personal injury or death.

Connect the tractor to the mobile unit.

Raise the front stabilizing legs.

Verify that the mobile unit is ready for transport.

Are all exterior doors closed and locked?

Is the Platform Lift in the transport position, fully seated in its retaining cradle?

Are the transport pins in place for the Platform Lift?

Are all running & marker lights working correctly?

Are any warning lights illuminated?

Is the fuel tank full?

Verify that the air suspension system is fully inflated and at the proper ride height. . The lowest point of the trailer sidewall should be approximately 15" above ground level.

Appendix B: Troubleshooting

If any of the following troubleshooting guides do not correct the problem, or if the problem worsens, please contact Advanced Mobility Specialty Vehicles for service, or refer to the volumes of literature that shipped with the mobile unit. In these volumes you will be able to find individual product manuals, as well as a list of local service representatives.

AC Power Indicator Light is off...and White Strobe is flashing

If the AC Power Indicator Light is "OFF" and the white power loss strobe light is flashing then the mobile unit is not receiving AC power. The mobile unit must have power at all times. If the mobile unit is on site, shore power must be connected.

If the mobile unit is being transported, then the vehicle must be stopped and the following items checked. Please refer to the Advanced Mobility Specialty Vehicles VOL II Vendor Information binder for the product manual, the Advanced Mobility Specialty Vehicles VOL I Service/Operator Manual binder for a list of local service representatives, or contact Advanced Mobility Specialty Vehicles for service.

Generator power is connected when the A/C power Off strobe light illuminates:	
1.	Verify that the fuel tank has fuel.

Transport Warning Light is on...



If the Transport Warning Light is on, the mobile unit must not be moved. If the mobile unit is moved while this light is on, irreparable damage to the mobile unit, serious injury or death can occur.

If the Transport Warning Light is illuminated, the mobile unit is not ready for transport. Before the mobile unit can be transported, this light must be off. Please refer to the following table:

Problem:	Solution:
The Platform Lift is not in the proper transport position.	1. Make sure that the Platform Lift is seated in the cradles.
	2. Make certain that the transport pins have been inserted.
	3. If Emergency Air from the tractor is connected to the trailer Ensure that #s 1 & 2 above have been accomplished.
Dispensing Room Door is not in the proper transport position	1. Make sure the door is open and latched in position for transport.
Gantry Room Door is not in the proper transport position	2. Make sure the door is open and latched in position for transport.

Humidity is out of specifications...

The humidity settings for the mobile unit are 35% RH to 45% RH (relative humidity). If the mobile unit is experiencing humidity levels outside of this range, either too low or too high, please refer to the following table.

Problem		Check for:	Solution:
The humidity inside of the mobile unit is too high.	1.	Check for exterior doors that have been left open during humid conditions.	The HVAC system can only support the environment of the mobile unit. Unless opened for use, all exterior doors should remain closed all of the time.
	2.	Check for blocked or dirty air vents and/or air conditioner filters.	Clean the air vents and/or change the air conditioner filters. After this has been done, check for any changes to the humidity levels.
	3.	Check to see if the humidifier is constantly running.	Verify that the humidifier is set between 35% and 45% RH (relative humidity). If the humidifier is still running constantly, contact Advanced Mobility Specialty Vehicles for service.
The humidity inside of the mobile unit is too low.	1.	Check for open exterior doors left open during arid weather conditions.	The HVAC system can only support the environment of the mobile unit. Unless opened for use, all exterior doors should remain closed all of the time.
	2.	Check for blocked or dirty air vents and/or air conditioner filters.	Clean the air vents and/or change the air conditioner filters. After this has been done, check for any changes to the humidity levels.
	3.	Check to see if the A/C disconnect is in the "OFF" position.	Turn the A/C disconnect to the "ON" position.
	4.	Check to see if the humidifier disconnect is in the "ON" position.	Move the humidity disconnect to the "ON" position and verify that the humidifier is set between 35% and 45% RH (relative humidity). If the humidifier is running and the humidity level does not change, a problem exists within the humidity system.

Humidifier Empty Water Light is illuminated

If the humidifier empty water light is illuminated, the humidifier water tank is low or empty. Refill the water tank. The tank can be filled internally through the fill pipe or can be filled by connecting the water hose to the humidifier water connection on the side of the unit and to the facility.

Temperature is out of specifications...

If the temperature is out of specifications, either too high or too low, refer to the following table.

Problem:		Check for:	Solution:
The temperature inside of the mobile unit is too warm.	1.	Check for exterior doors left open during warm weather conditions.	The HVAC system can only support the environment of the mobile unit. Unless opened for use, all exterior doors should remain closed all of the time.
	2.	Check for blocked or dirty air vents and/or air conditioner filters.	Clean the air vents and/or change the air conditioner filters. After this has been done, verify that cold air is blowing.
	3.	Check to see if the A/C disconnect is in the "OFF" position.	Turn the A/C disconnect to the "ON" position.
	4.	The Thermostat Control settings are correct.	Verify that the Thermostat Control is set at 68°F. Please contact Advanced Mobility Specialty Vehicles for further assistance.
The temperature inside of the mobile unit is too cold.	1.	Check for open exterior doors left open during cold weather conditions.	The HVAC system can only support the environment of the mobile unit. Unless opened for use, all exterior doors should remain closed all of the time.
	2.	Check for blocked or dirty air vents and/or air conditioner filters.	Clean the air vents and/or change the air conditioner filters. After this has been done, verify that warm air is blowing.
	3.	Check to see if the A/C disconnect is in the "OFF" position.	Turn the A/C disconnect to the "ON" position.
	4.	The Thermostat Control settings are correct.	Verify that the Thermostat Control is set at 72°F. Please contact Advanced Mobility Specialty Vehicles for further assistance.

Appendix C: HVAC Set Points



The HVAC system is critical to the operation and life of the equipment. The medical equipment operates within strict limits regarding temperature and humidity. All aspects of the HVAC system such as baffling, venting, component set points, and sensor placement have been adjusted for optimum operation. Under no circumstances should any aspect of the HVAC system be altered from factory specifications.



Be certain that the HVAC system is operational at all times.

There are two set points for the HVAC system. These points are set at the factory and should not be changed under any circumstances. Altering these points can result in damage to the medical equipment.

Temperature Controller Settings

The high temperature sensor is set at 72°F. If the ambient temperature in the mobile unit reaches 72°F, the HVAC system will automatically start in order to cool the unit.

The low temperature sensor is set at 68°F. If the ambient temperature in the mobile unit reaches 68°F, the HVAC system will automatically start in order to warm the unit.

Humidity Settings

The humidistat set point is 35% relative humidity.



Kentucky Trailer
6370 Emerald Pkway, Ste.106
Monee, IL 60449
(708) 235-2800 main number
(708) 235-2002 fax

Custom Specialty Vehicles



GPCMI-3000-D10-48-00
Page 96 of 102

Appendix D: A-1 Circuit Malfunction Checklist

Category 1

Visual Checks – Check for the most common occurrences.

Is the circuit breaker, in the 480V AC electrical panel, in the “ON” position?

Category 2

Component Checks – (some tools may be required).

Check the emergency off button in Control Room. N.O.?

Check the emergency off button in Gantry Room. N.O.?

For additional troubleshooting, please contact Advanced Mobility Specialty Vehicles for assistance.

Appendix E: Lockout/Tagout Procedures

Specific Energy Control Procedures

Machine or Equipment for this Procedure:

Specialty Vehicle Trailer: **GE MIDR PET/ CT System**

Control of Hazardous Energy:

Type of Hazardous Energy		When is it Necessary to Lock Out
Electrical	480V AC	When servicing main electrical power line
Electrical	120/208V AC room circuits	When servicing or performing installation inside specific sections of the trailer
Electrical	12V DC	When servicing the following: Generator, Platform Lift, Slide-outs, Hydraulic System, Digital Levels
Electrical	12V DC From Battery	When servicing the following: Generator, Platform Lift, Slide-outs, Hydraulic System, Digital Levels

Affected Personnel to notify when the Specialty Vehicles Trailer is to be Locked Out:

Name/Department:	Location:
Production employees	In the vicinity of the trailer

Shut down specifications for the Specialty Vehicle Trailers:

Energy Type and Rating:	Type of Energy Isolating Device:	Location of Energy Isolating Device:	Lockout Device Used:
Main power feed Electrical 480V AC	Circuit Breaker or Plug	Normally located above the Facility Power Shore	Lock and tag with or without lockout hasp
Light or outlet circuits Electrical 120/208V AC	Wall switch or circuit breaker	Distribution panel for circuit breaker, wall switch for room circuits	Lock and tag with a Universal Wall Switch Lockout, Universal Circuit Breaker Lockout
Generator Power engaged when main power is lost	Generator Breaker Switch	Inside service panels, on front of Generator control cover.	Lock and tag with a Circuit Breaker Lockout attachment device
Power to lift panels Electrical 12V DC	Breaker Switch	Inside service panels	Lock and tag with a Circuit Breaker Lockout attachment device
Electrical 12V DC From Battery	Remove Battery Cables	On battery	Lock and tag with a Plug Lockout attachment device
Medical System GE Comet PET / CT	100A 3 Phase Circuit Breaker	480V AC Panel in equipment area	Lock and tag with or without lockout hasp
Air Conditioning System	40A 3 Phase Circuit Breaker for each system	480V AC Panel in equipment area	Lock and tag with or without lockout hasp
Heating System	Air Conditioning Circuit Breaker	480V AC Panel in equipment area	Lock and tag with or without lockout hasp
Slide-out Heaters	15A 2 Pole Single Phase Circuit Breaker	120/208V AC Panel in equipment area	Lock and tag with or without lockout hasp

Methods to dissipate energy:

N/A

Method of Verifying the Isolation of the Machine or Equipment:

Voltmeter

Appendix F: Leveling The Mobile Unit

NOTE: ALL PERSONS NOT DIRECTLY INVOLVED WITH THE LEVELING PROCESS TO BE OUT OF THE MOBILE DURING THE LEVELING PROCEDURE.

Park the mobile on pad per site planning guide and set the parking brake

Lower the front stabilizing legs.

Move and hold the pump switch in the “Pump On” position.

Pull the levers toward you to extend the stabilizing legs to their extended position.

Extend the legs far enough to raise the unit enough to clear the fifth wheel.

Release the pump switch. The switch should automatically return to the “Pump Off” position.

Turn on the Digital Displays and allow the displays to operate a minimum of 30-45 sec. prior to their use.

Verify the mobile has been raised high enough to clear the fifth wheel and then disconnect the tractor from the mobile unit. **DO NOT** disconnect the air and electrical lines.

Install the rear stabilizing stands by placing the stands underneath the rear of the mobile unit where the structural supports are located. (Between rear axles).

Return to the landing/stabilizing leg controls at the front of mobile.

Locate the “Suspension Control” switch and turn to the “Deflate” position. The rear air suspension system will automatically deflate and the mobile will lower itself onto the rear stabilizing stands.

Check to verify that the structural supports of the mobile unit are centered on the stabilizing stands. If the supports are not centered, then the mobile must be raised and the stands must be adjusted accordingly.

Once the air has been completely deflated from the rear suspension, observe the readout on the digital display marked “**Rear Side to Side**”.

Note: GE Medical Systems requires a reading within $\pm .010^\circ$ for proper “Rear Side to Side” siting.

Adjust the “**Front to Back**” levelness of the mobile unit. This accomplished by pushing or pulling both landing/stabilizing leg control levers at the same time to achieve proper “**Front to Back**” levelness.

Note: GE Medical Systems requires a reading within $\pm .10^\circ$ for proper “Front to Back” siting.

Adjust the “**Front Side to Side**” levelness of the mobile. Push or Pull the corresponding landing/stabilizing leg control to adjust the “**Front Side to Side**” digital display reading to **MATCH** the “**Rear Side to Side**” digital display reading observed in Step 9. By matching the reading between the two displays, twist is eliminated in the length of the mobile unit.

Note: GE Medical Systems requires a reading within $\pm .010^\circ$ for proper “Front Side to Side” siting.

Re-verify that all the digital display are still with the above mentioned requirements, if not adjust accordingly.

The mobile is now properly sited, continue set-up of the mobile unit.



Kentucky Trailer
 6370 Emerald Pkway, Ste.106
 Monee, IL 60449
 (708) 235-2800 main number
 (708) 235-2002 fax

Custom Specialty Vehicles



GPCMI-3000-D10-48-00
 Page 100 of 102

Appendix G: Quarterly Maintenance Checklist



PREVENTIVE MAINTENANCE CHECKLIST

Company Performing Preventive Maintenance:

Service Technician:

Trailer ID # :	Date	Date	Date	Date	
HVAC	3M	6M	9M	12M	Comments
Inspect/change filters					
Inspect Thermostats					
Verify heat strip operation					
Inspect/clean evaporator coil					
Clean/inspect condenser coils					
Inspect electrical contactors					
Verify refrigerant pressures					
Inspect refrigeration piping abrasion					
Lubricate fan motors if applicable					
Inspect covers/fasteners					
Verify compressor amp draw					
Verify condensate pans/drains					
Verify Condenser motor operation					
Chiller	3M	6M	9M	12M	Comments
Inspect electrical contactors					
Verify refrigerant pressures					
Inspect refrigeration piping abrasion					
Inspect pump seal					
Lubricate motors					
Clean/replace aluminum filters					
Inspect covers/fasteners					
Verify operating/alarm controls					
Verify CW supply temp 45-75 F					
Inspect/replace glycol filter					
Clean/ inspect condensing coils					
Verify/adjust glycol level					
Verify Condenser motor operation					



Kentucky Trailer
 6370 Emerald Pkway, Ste.106
 Monee, IL 60449
 (708) 235-2800 main number
 (708) 235-2002 fax

Custom Specialty Vehicles



GPCMI-3000-D10-48-00
 Page 101 of 102

Trailer	3M	6M	9M	12M	Comments
Test/inspect lift gate					
Inspect rails/ pins					
Inspect lift fittings/pivot points					
Clean / lubricate slide rails					
Verify lift switches and remote					
Load test van battery (lift)					
Verify hydraulic fluid level					
Verify van battery charger					
Verify roll door controls					
Inspect roll door mounting bolts					
Inspect roll door clutch/hardware					
Inspect roll door side track rails					
Inspect roll door key way					
Inspect awning					
Inspect bay door shocks/hardware					
Verify bay light operation					
Inspect clean and RF door gasket. Verify RF door operation					
Verify RF door lock and the handle operate correctly					
Check RF door for binding and loose hardware.					
Check door hinges/stops/latches for proper operation					
Inspect Slide outs for operation					
Inspect Slide out compressor					
Empty compressor drain and verify Y-strainer is cleaned out					
Check Fire system Last Inspection Date					
Inspect stair mounts					
Inspect interior flooring					
Verify bay heater operation					
Inspect cabinet latches and hinges					
Verify phone/communication lines					
Inspect landing gear					
Inspect locking pins					
Inspect air drive or air/hydraulic					
Inspect air tanks					
Verify hub fluid levels					
Inspect undercarriage/frame					
Inspect airbags/airlines/fittings					
Inspect shocks/bushings					
Inspect Tires / Rotate as needed					
Note hub meter mileage _____					



Kentucky Trailer
 6370 Emerald Pkwy, Ste.106
 Monee, IL 60449
 (708) 235-2800 main number
 (708) 235-2002 fax

Custom Specialty Vehicles



Generator	3M	6M	9M	12M	Comments
Clean fuel/water separator & replace filter					
Lamp test on control panel					
Inspect fuel lines & injectors					
Change oil/filters- 250 hrs					
Check crankcase breather					
Check hoses/belts					
Verify radiator coolant level					
Verify coolant freeze point & pH					
Verify block heater operation					
Inspect housing mounting bolts					
Inspect muffler/brackets					
Verify battery charging voltage					
Load test battery/clean terminals					
Verify voltage & hertz output					
Record hours run since last P.M. () Recorded Generator Hours					

Electrical	3M	6M	9M	12M	Comments
Inspect breakers and panels					
Inspect lighting and bulbs					
Inspect power cord and plug					
Inspect 110volt outlets					

Humidifier	3M	6M	9M	12M	Comments
Inspect/replace steam tank					
Verify humid control set point					
Inspect/fill water reservoir					
Clean fill and drain valves					
Verify 12 volt pump					

Misc.	3M	6M	9M	12M	Comments
Attach and/or fill out Quarterly Service Record for all major components					

Comment :

Signature of Technician: _____ Date: _____